



# COYOTE HILLS RANCH

---

## ANNUAL LIMOUSIN & LIM-FLEX PRODUCTION SALE

Saturday, May 4, 2024 • Noon CDT • At The Ranch • Chattanooga, Oklahoma

# COYOTE HILLS RANCH

## ANNUAL LIMOUSIN & LIM-FLEX PRODUCTION SALE

Saturday, May 4, 2024 • Noon CDT • At The Ranch • Chattanooga, Oklahoma  
(See map and directions on back cover)

### SELLING 86 LOTS

#### 41 Fall Pairs

All Polled, All Black  
32 are Double Homozygous  
Average Age: 3.7 years  
Calves will be split sale day

#### 25 Spring Breds/Pairs

All Black, All Polled  
18 are Double Homozygous  
Average Age: 3.5 years

#### 7 Open Heifers

All Black, All Polled  
2 are Double Homozygous

#### 13 Yearling and 18 Month Old Bulls

All Black, All Polled  
10 Double Homozygous  
Semen and Trich Tested

#### SHOW HEIFER PROSPECTS

Jr. National Late Entry Fee Waived  
Scramble Certificates Accepted  
TLA Shoot-Out Eligible

Bid Live:

**LiveAuctions.TV** 817/725-8595

Certified Bangs Free Herd No. 826



Sue Ann & Shana Holloway & Ross Turner  
Shana, cell: 580/695-2831

Clendon Bailey, Cattle Manager • 580/704-6739  
chr@coyotehillsok.com • www.coyotehillsok.com

#### Lodging:

**HILTON GARDEN INN** ..... 580/280-2100  
135 NW 2nd Street • Lawton, OK  
**FAIRFIELD INN & SUITES** ..... 580/248-5500  
201 SE 7th Street • Lawton, OK  
**HAMPTON INN & SUITES** ..... 580/355-8200  
2610 NW Cache Road • Lawton, OK  
**HOLIDAY INN EXPRESS** ..... 580/248-4446  
I-44 & Gore Blvd. • Lawton, OK

#### Auctioneer:

**RONN CUNNINGHAM** ..... 918/629-9382

#### Sale-Day Phones:

**HOME** ..... 580/597-2419  
**CLENDON BAILEY** ..... 580/704-6739  
**BRUCE LAWRENCE** ..... 806/790-2535  
**SHANA HOLLOWAY** ..... 580/695-2831

#### Lunch Available courtesy of



**Livestock  
Nutrition Center**

View this catalog & videos online. Cattle are cataloged in age order.  
Sale order will be posted at [www.coyotehillsok.com](http://www.coyotehillsok.com),  
[lawrencefamilylimousin.com](http://lawrencefamilylimousin.com) and [liveauctions.tv](http://liveauctions.tv)

#### Sale Consultant:



KILEY McKINNA • 402/350-3447  
WILEY FANTA • 320/287-0751  
mcmarketingsales@aol.com  
[www.mcmarketingmanagement.com](http://www.mcmarketingmanagement.com)

**Lawrence  
Family  
Limousin**

Bruce, Paula & Lee Roy Lawrence  
Jonny, Amber & Colt Parkinson  
Bruce: 806/790-2535  
Amber: 806/773-6043  
Lee Roy: 806/778-0548  
email: [bl1@speednet.com](mailto:bl1@speednet.com)

# WELCOME

Dear Friends,

Welcome to Coyote Hills Ranch. We trust you will come early and enjoy yourself, meet new friends and renew old acquaintances. Circle May 4 on your calendar and plan to be with us in Chattanooga.

As it always has, the annual Coyote Hills Ranch Production Sale offers some of the top Limousin and Lim-Flex genetics available anywhere in the country. Most of the females in this sale were born and raised here in the short grass country of southwestern Oklahoma, or the west Texas panhandle, and those that were not have been managed in a similar manner. Regardless of the prefix these cattle are carrying, buy from these breeders with the utmost confidence, as we are all truly in this together.

You will note that we offer a host of information in the catalog – and additional information will be available sale day on the supplement sheet. If you have any questions regarding any of this information, don't hesitate to contact any member of the sale team. You may also monitor our website ([www.coyotehillsof.com](http://www.coyotehillsof.com)) for sale updates including videos of the cattle selling.

We appreciate your interest in these genetics and look forward to working with you. Don't hesitate to contact any one of us with any questions you may have.

See you May 4.

Sincerely,  
Coyote Hills Ranch Crew and Friends



**Lawrence  
Family  
Limousin**

## SPECIAL GUESTS & REPRESENTATIVES:

Bruce Lawrence .....	Ex-Officio, North American Limousin Foundation
Ronn Cunningham .....	Secretary, North American Limousin Foundation
Troy Gulotta .....	Director, North American Limousin Foundation
George Hubbard .....	Director, North American Limousin Foundation
Shana Holloway .....	President, Oklahoma Limousin Breeders Association
Colton Pratz .....	Oklahoma Cowman
Phil Stoll .....	The Weekly Livestock Reporter
Scott Manley .....	Special Assignment
DeRon Heldermon .....	Special Assignment
Chisolm Kinder .....	Special Assignment
L.D. Barker, DVM & Matt Barker, DVM .....	Professional Animal Health
Keith Smiley, Trucking .....	580/695-2735
Randy Lathrop, Trucking .....	847/910-4673
J. McNeill, Trucking .....	940/391-6976

*The entire sale offering has been developed to deliver a product with calving-ease, growth, muscle and marbling in a black, polled, docile package. Raised in the arid conditions of southwest Oklahoma and west Texas, these cattle represent some of the top genetics in the Limousin breed'.*

**Videos of sale cattle available at  
[www.coyotehillsof.com](http://www.coyotehillsof.com) &  
[www.lawrencefamilylimousin.com](http://www.lawrencefamilylimousin.com)**



# Congratulations!



2024 Cattlemen's Congress  
Grand Champion Lim-Flex Pen,  
People's Choice Grand Champion Lim-Flex Pen  
Shown by Lawrence Family Limousin, Anton, TX



2024 National Western Stock Show  
Grand Champion Lim-Flex Pen  
Shown by Lawrence Family Limousin, Anton, TX



# PERCENTILE BREAKDOWN

	GE	CD	BW	WW	YW	MK	TM	CM	SC	ST	DC	YG	CW	RE	MB	FAT	\$MI
Current Average of Limousin Active Sires	-3.0	9	1.6	60	88	25	54	6	0.5	11	12	-0.49	19	1.05	-0.07	-0.08	49.52
Current Average of Limousin Active Dams	-2.8	10	1.3	58	85	25	53	6	0.4	12	12	-0.49	17	1.01	-0.06	-0.08	49.23
Current Average of Lim-Flex Active Sires	-3.6	11	1.0	69	110	25	59	7	0.9	11	13	-0.13	35	0.62	0.29	-0.02	62.41
Current Average of Lim-Flex Active Dams	-3.3	11	0.9	65	102	25	57	6	0.8	12	12	-0.17	30	0.63	0.25	-0.02	60.25

In order to allow you to compare the animals in this sale with the breed average, we have listed their percentile rank alongside the EPDs of the breed's most economically relevant traits. This allows you to make a quick reference when selecting for specific traits to fit your needs.

EPDS USED IN THIS CATALOG ARE CURRENT AS OF 4/9/24

## VACCINATION PROGRAM

### TIMING

### PRODUCT SUGGESTION

Birth..... CalfGuard (if needed)<sup>1</sup>

Branding (-3 months)..... Bovi-Shield Gold<sup>2</sup>  
Ultrachoice™<sup>7</sup>

Preweaning (-2-4 weeks prior)..... Bovi-Shield Gold<sup>2</sup>  
OneShot  
Ultrabac 7/Somubac  
Spirovac<sup>3</sup>  
Ivomec

Weaning..... Bovi-Shield Gold FP 5 VL 5  
Ivomec  
Ultrabac 7/Somubac

Prebreeding (heifers/developing bulls)..... Bovi-Shield Gold<sup>2</sup>  
Spirovac<sup>3</sup>

Prebreeding (cows/bulls annually)..... Bovi-Shield Gold<sup>2</sup>  
Spirovac<sup>3</sup>  
Ivomec

Pregnancy Breeding Soundness Exam (cows/bulls annually)..... Leptoferm 5  
Ivomec

- 1 Rota-corona virus vaccine administered prior to nursing
- 2 May be given to calves nursing pregnant cows if cows have been vaccinated within the previous year with Bovi-Shield (or PreGuard)
- 3 Spirovac should be administered to breeding animals twice at 4-6 week intervals the first year of administration. Spirovac should be administered as early in life as possible (after 4 weeks of age) to provide immunity prior to exposure and potential development of the carrier state. A preweaning/weaning period is included in the protocol. However, this could be given at branding (followed by a 2-4 week booster) or twice prior to breeding.

### NOTES

- No more than three gram (-) vaccines administered at one time
- 5-way Lepto administered twice annually (6 month intervals) in "high risk" herds and once annually in "low risk" herds
- Spirovac administered twice the first year and once annually
- Spirovac filters may be a problem for export requirements or AI centers. Consult your veterinarian or AI center personnel prior to administration to breeding animals destined for export or semen collection.
- Bovi-Shield may be used in calves nursing pregnant heifers/cows or in pregnant heifers/cows if the heifers/cows were vaccinated within 12 months. Bovi-Shield must be given initially to open females.
- ScourGuard 3 (K)/C should be administered precalving if calf scours is a problem. This should be administered twice (at least two weeks apart) the first year, with the second dose given 2-3 weeks before calving. A single annual booster may be given 2-3 weeks before each subsequent calving. Heifers' calves are twice as likely to develop scours as calves born to mature cows.



Take note: When applicable sale lots are indicated with the GE-EPD (Genomically Enhanced Expected Progeny Differences) logo. They are the best estimate of the animal's genetic worth as a parent as if they have produced 10-25 progeny.

# FALL PAIRS



LOT 1

LOT 1A



LOT 2

LOT 2A

## 1 CHR JMFA JUST A JEN 106J

COW

LIM-FLEX(54/48.4) • HOMO POLLED (P-1) • HOMO BLACK (P-3)  
09/01/2021 • JMFA 106J • LFF2494868

— ELMW ALFALFA 103B  
**AHCC EASY RIDER 5594E**  
— AHCC MISS Y AXIS C5594 ET

— MAGS ALI  
**CHR GIN ON THE ROCKS 105G**  
— LH BACARDI 010B

ACT BW: 64    ADJ WW: 634    ADJ YW: 944

	EPDs	%Rnk
CE:	10	55
BW:	1.9	75
WW:	87	2
YW:	138	3
MK:	21	75
TM:	64	20
CM:	6	55
SC:	1.38	10
DC:	12	55
YG:	-.04	80
CW:	.43	15
RE:	.61	50
MB:	.42	20
FAT:	.01	85
\$MI:	.72	10

CONSIGNEE BY: COYOTE HILLS RANCH, CHATTANOOGA, OK  
AI'd 11/30/23 to CHR Free Agent 215F; PE'd 12/12/23-2/9/24 to  
CHR Free Agent 215F; PE'd 3/4/24 to sale day to CHR Hard Rocks.  
Be sure and take a hard look at this young, double homozygous  
daughter of AHCC Easy Rider. She has style and good numbers to boot.

## 2 LFL FAWN 8301F ET

COW

LIM-FLEX(50/44.8) • HOMO POLLED (T) • HOMO BLACK (P-1)  
09/09/2018 • BLAW 8301F • LFF2158368

— MAGS APPLESEED  
**MAGS CABLE**  
— MAGS ZEQUIN

— EXAR DENVER 2002B  
**LFL CHARITY 5014C ET**  
— PCC XOTIC 016 X

ACT BW: 70    ADJ WW: 748    ADJ YW: 894  
ADJ RIB FAT: 0.4    ADJ REA: 10.01    ADJ \$IMF: 6.51

GE-EPDs

	EPDs	%Rnk
CE:	12	30
BW:	2.1	75
WW:	73	25
YW:	118	20
MK:	27	35
TM:	64	20
CM:	8	20
SC:	1.2	15
DC:	15	20
YG:	-.11	65
CW:	.48	10
RE:	.72	35
MB:	.56	10
FAT:	-.01	60
\$MI:	.74	5

CONSIGNEE BY: LAWRENCE FAMILY LIMOUSIN, ANTON, TX  
AI'd 11/13/23 to LFL Jetson 1300J ET; PE'd 11/25/23-2/29/24 to  
LFL Jetson 1300J ET.

As a flushmate to LFL Gunslinger, LFL Fawn is a hard one to part with.  
Her dam is one of our top donors. Check out her fancy heifer calf at  
side. Fawn ranks in the top 4% in the New TI index, 5% for \$MI, 10% for  
MB & CW, 15% for SC and 20% for YW, TM, CM and DC!

## 1A CHR LEADING MAN 134L

BULL

LIM-FLEX(60/54.3) • HOMO POLLED (P-2) • DOUBLE BLACK  
09/14/2023 • KQ 134L • LFM2798957

— MAGS AVIATOR  
**LFL DIVIDEND 6084D ET**  
— DJ XECUTIVE PRIVILEGE

— AHCC EASY RIDER 5594E  
**CHR JMFA JUST A JEN 106J**  
— CHR GIN ON THE ROCKS 105G

ACT BW: 78    ADJ WW: 708    ADJ YW:

	EPDs	%Rnk
CE:	9	70
BW:	1.3	60
WW:	74	30
YW:	122	25
MK:	25	50
TM:	63	30
CM:	6	55
SC:	.64	80
DC:	16	10
YG:	0	85
CW:	.33	55
RE:	.43	85
MB:	.46	20
FAT:	.01	85
\$MI:	.69	20

CONSIGNEE BY: COYOTE HILLS RANCH, CHATTANOOGA, OK  
This Dividend son will go on and do a good job on any cow herd. Study  
his pedigree and EPDs.

## 2A LFL LEANN 3211 L

COW

LIM-FLEX(55/49.5) • HOMO POLLED (P-1) • HOMO BLACK (P-3)  
11/01/2023 • BLAW 3211L • LFF2797934

— COLE DEPUTY 37D  
**LFL JETSON 1300J ET**  
— AUTO BLISS 265Y

— MAGS CABLE  
**LFL FAWN 8301F ET**  
— LFL CHARITY 5014C ET

ACT BW: 76    ADJ WW: 720    ADJ YW:

GE-EPDs

	EPDs	%Rnk
CE:	13	20
BW:	-.5	20
WW:	77	20
YW:	126	20
MK:	23	70
TM:	61	40
CM:	7	35
SC:	.55	85
DC:	15	20
YG:	.11	95
CW:	.37	40
RE:	.23	95
MB:	.97	1
FAT:	.03	95
\$MI:	.88	1

CONSIGNEE BY: LAWRENCE FAMILY LIMOUSIN, ANTON, TX  
Don't miss this fancy LFL Jetson daughter that reads about as good as  
you can get on her EPDs and ratio'd 110 on WW.

# FALL PAIRS



LOT 3



LOT 4

## 3 SSTO FOXY 8913F ET

COW

LIM-FLEX(50/44.9) • HET POLLED (T) • HOMO BLACK (P-1)  
10/25/2018 • SSTO 8913F • LFF2160423

— DAMERON FIRST CLASS  
**EXAR CLASSEN 1422B**  
— EXAR PRINCESS 2006

— TMCK DURHAM WHEAT 6030X  
**RIVERSTONE CHARMED**  
— HSF YOUR FANTASY

GE-EPDs

ACT BW: 77    ADJ WW: 664    ADJ YW: [ ]

CONSIGNEE: PEYTON COLLUM, GUTHRIE, OK:  
BRUCE BROOKS, 580-695-2036

PE'd 10/1/23-12/1/23 to BNTL Flex Machine 352 ET.

A Classen daughter out of the famed Riverstone Charmed cow, Foxy was 5th overall Lim-Flex heifer at the 2020 National Junior Limousin Heifer Show in West Monroe, Louisiana. She sells without a calf. Her bull calf has been weaned and sold as a herd sire prospect.

	EPDs	%Rnk
CE:	7	90
BW:	3.5	95
WW:	75	20
YW:	113	30
MK:	27	35
TM:	65	20
CM:	6	55
SC:	.95	45
DC:	17	5
YG:	.03	90
CW:	45	15
RE:	.5	70
MB:	.11	80
FAT:	.02	95
\$MI:	56	70

## 4 CHR GIN & TONIC 104G

COW

LIM-FLEX(53/47.1) • HOMO POLLED (T) • HOMO BLACK (P-2)  
09/01/2019 • KQ 104G • LFF2271855

— CONNEALY CONSENSUS 7229  
**MAGS ALI**  
— MAGS YOKO

— DHVO DEUCE 132R  
**LH BACARDI 010B**  
— SENNETT BLACKCAP 517RLF37

ACT BW: 64    ADJ WW: 634    ADJ YW: 908

CONSIGNEE: COYOTE HILLS RANCH, CHATTANOOGA, OK  
AI'd 11/30/23 to LFL Genetic Values; PE'd 12/12/23-2/9/24 to CHR Free Agent 215F; PE'd 3/4/24 to sale day to CHR Hard Rocks; Preg checked 3/20/24; 105 days safe.

Gin & Tonic 104G is a twin whose mama raised her and her sister well. This double homozygous good numbered young cow will go on to do a good job for you.

	EPDs	%Rnk
CE:	9	70
BW:	.5	40
WW:	76	15
YW:	115	25
MK:	25	45
TM:	63	25
CM:	5	70
SC:	1.9	1
DC:	14	30
YG:	.04	95
CW:	41	20
RE:	.22	95
MB:	.28	45
FAT:	-.01	60
\$MI:	63	35



PCOL LUCKY  
Daughter of Lot 3



PCOL LUCY  
Daughter of Lot 3

## 4A CHR LADY A 129L

COW

LIM-FLEX(51/45.5) • HOMO POLLED (P-1) • HOMO BLACK (P-3)  
09/12/2023 • KQ 129L • LFF2798949

— EXAR EPIC 6072B  
**CHR HOSS 055H ET**  
— PBRS TOUCH ME GENTLY 798T

— MAGS ALI  
**CHR GIN & TONIC 104G**  
— LH BACARDI 010B

ACT BW: 73    ADJ WW: 800    ADJ YW: [ ]

CONSIGNEE: COYOTE HILLS RANCH, CHATTANOOGA, OK  
Check out Lady A, she's got cow power on both sides of her pedigree!

	EPDs	%Rnk
CE:	10	55
BW:	1.3	60
WW:	88	3
YW:	145	3
MK:	27	30
TM:	70	10
CM:	7	35
SC:	1.5	5
DC:	14	35
YG:	.06	95
CW:	55	4
RE:	.41	85
MB:	.31	45
FAT:	0	70
\$MI:	68	25

# FALL PAIRS



LOT 5



LOT 5A



LOT 6

## 5 LFL FUZZY NAVEL 8101 F

**COW** LIM-FLEX(54/49.1) • HOMO POLLED (P-2) • HOMO BLACK (P-2)  
09/13/2018 • BLAW 8101F • LFF2157260

— MAGS WINSTON  
**MAGS AVIATOR**  
— MAGS XTRA REST

— MAGS UNITE TOGETHER  
**LFL DOUBLE TAKE 6100 D**  
— MAGS SILHOUETTE

GE-EPDS

ACT BW: 55    ADJ WW: 720    ADJ YW: 963  
ADJ RIB FAT: 0.4    ADJ REA: 11.71    ADJ \$IMF: 7.24

CONSIGNED BY: LAWRENCE FAMILY LIMOUSIN, ANTON, TX

AI'd 11/13/23 to Wulfs Joint Venture G579J; PE'd 11/25/23-2/29/23 to LFL Judson 1011J.

Her four calves have ratio'd 105 for weaning. Three calves' have ratio'd 102 at yearling and 106 for REA & IMF. Her first calf, LFL Hagen, was a member of our 2022 Champion Lim-Flex Pen in OKC and was a top seller in the 2022 CHR Bull Sale.

	EPDs	%Rnk
CE:	12	30
BW:	1.2	55
WW:	71	30
YW:	114	25
MK:	29	20
TM:	65	20
CM:	7	35
SC:	.15	95
DC:	15	20
YG:	-.07	75
CW:	30	50
RE:	.63	50
MB:	.45	15
FAT:	.01	85
\$MI:	69	15

## 6 HUBB HAYDEN 0105H ET

**COW** LIM-FLEX(68/60.7) • DOUBLE POLLED • HOMO BLACK (P-2)  
01/09/2020 • HUBB 0105H • LFF2277154

— DHVO DEUCE 132R  
**TASF CROWN ROYAL 960C ET**  
— TASF WHISKEY LULLABY 357W

— MAGS XUKALANI  
**MAGS ZALIA**  
— MAGS RUNNING ON EMPTY

ACT BW: 83    ADJ WW: 727    ADJ YW:

CONSIGNED BY: PEYTON COLLUM, GUTHRIE, OK:  
BRUCE BROOKS, 580-695-2036

PE'd 10/1/23-12/1/23 to BNTL Flex Machine 352 ET.

This past competitive show heifer for Kinley Collum. Plus she is bred right and carries impressive growth numbers.

	EPDs	%Rnk
CE:	10	55
BW:	2.2	80
WW:	74	20
YW:	115	25
MK:	20	80
TM:	57	50
CM:	5	70
SC:	1.05	35
DC:	7	95
YG:	-.28	25
CW:	36	30
RE:	.95	15
MB:	.13	75
FAT:	-.04	25
\$MI:	59	55

## 5A LFL LONG GUN 3159 L

**BULL** LIM-FLEX(57/51.7) • HOMO POLLED (P-3) • HOMO BLACK (P-3)  
09/18/2023 • BLAW 3159L • LFM2797894

— COLE DEPUTY 37D  
**LFL JETSON 1300J ET**  
— AUTO BLISS 265Y

— MAGS AVIATOR  
**LFL FUZZY NAVEL 8101 F**  
— LFL DOUBLE TAKE 6100 D

GE-EPDS

ACT BW: 79    ADJ WW: 690    ADJ YW:

CONSIGNED BY: LAWRENCE FAMILY LIMOUSIN, ANTON, TX

LFL Long Gun is a really good, double homozygous son of LFL Jetson that has a 13 CE EPD, ranks in the top 2% for MB and 4% for \$MTI.

	EPDs	%Rnk
CE:	13	20
BW:	1	50
WW:	65	65
YW:	106	60
MK:	24	60
TM:	57	65
CM:	7	35
SC:	.03	95
DC:	12	65
YG:	-.02	85
CW:	30	65
RE:	.59	60
MB:	.74	2
FAT:	.03	95
\$MI:	77	4

## 6A PCOL HAY HAY 02L

**COW** LIM-FLEX(66/59.4) • DOUBLE POLLED • HOMO BLACK (P-3)  
08/02/2023 • PCOL 02L • LFF2799330

— LFL DELUXE EDITION 6029D ET  
**LFL GAVIN 9137 G**  
— LFL ELEANOR 7103E ET

— TASF CROWN ROYAL 960C ET  
**HUBB HAYDEN 0105H ET**  
— MAGS ZALIA

ACT BW: 70    ADJ WW:    ADJ YW:

CONSIGNED BY: PEYTON COLLUM, GUTHRIE, OK:  
BRUCE BROOKS, 580-695-2036

A really nice heifer that could make a show heifer, but maybe not suited for a first timer. She's got the pedigree and numbers to make a great addition to anyone's cow herd.

	EPDs	%Rnk
CE:	9	70
BW:	2.3	80
WW:	79	15
YW:	123	25
MK:	20	90
TM:	59	55
CM:	4	85
SC:	.68	80
DC:	10	90
YG:	-.1	60
CW:	35	50
RE:	.59	60
MB:	.28	50
FAT:	-.01	55
\$MI:	65	40



# FALL PAIRS



LOT 7



LOT 8

LOT 8A

## 7 CHR GRETA 028G

COW

LIM-FLEX(62/55.5) • HOMO POLLED (T) • HOMO BLACK (P-2)  
03/17/2019 • KQ 028G • LFF2171688

— HA COYBOY UP 5405  
CHR EIGHT BALL 011E ET  
— PBRs TOUCH ME GENTLY 798T

— DHVO DEUCE 132R  
CHR XTRA CLASS 173X  
— KRVN REDEFINE 333R

ACT BW: 76    ADJ WW: 676    ADJ YW: 892

CONSIGNEE BY: COYOTE HILLS RANCH, CHATTANOOGA, OK  
AI'd 11/30/23 to CHR Hard Rocks 151H; PE'd 12/12/23 to sale day to  
CHR Hard Rocks 151H; Preg checked 3/20/24; 105 days safe.  
This double homozygous CHR Eight Ball daughter will make you a  
great cow. She's young and ready to go to work.

	EPDs	%Rnk
CE:	8	85
BW:	2.7	90
WW:	73	25
YW:	119	20
MK:	24	55
TM:	60	35
CM:	3	95
SC:	1.1	25
DC:	10	75
YG:	-.09	70
CW:	43	15
RE:	.52	65
MB:	.12	75
FAT:	-.02	45
\$MI:	57	65

## 8 CHR DANDY 125D

COW

LIM-FLEX(56/50.7) • HOMO POLLED (P-2) • HOMO BLACK (P-1)  
09/07/2016 • KQ 125D • LFF2119367

— MAGS WINSTON  
MAGS ZODIAC  
— MAGS XANTHOUS

— JCL LODESTAR 27L  
CHR XCELLANT ALIBI 162X  
— GREEN GARDEN TARA G106

ACT BW: 64    ADJ WW: 670    ADJ YW: 928

CONSIGNEE BY: COYOTE HILLS RANCH, CHATTANOOGA, OK  
AI'd 11/30/23 to MAGS Cable 517C; PE'd 12/12/23 to sale day to  
CHR Hard Rocks 151H; Preg checked 3/20/24; 100 days safe.  
This MAGS Zodiac daughter is a big bodied, easy doing cow that  
has been a great producer for us. She's got the look and the number  
to match!

	EPDs	%Rnk
CE:	13	20
BW:	-.5	20
WW:	67	45
YW:	117	20
MK:	28	30
TM:	61	35
CM:	6	55
SC:	.6	75
DC:	12	55
YG:	.1	95
CW:	39	25
RE:	.27	95
MB:	.23	55
FAT:	.02	95
\$MI:	58	60

## 7A CHR LACEY 106L

COW

LIM-FLEX(63/55.7) • HOMO POLLED (P-1) • HOMO BLACK (P-3)  
09/02/2023 • KQ 106L • LFF2798947

— MAGS FAULTLESS 154F  
CHR HARD ROCKS 151H  
— CHR CRICKET 161C

— CHR EIGHT BALL 011E ET  
CHR GRETA 028G  
— CHR XTRA CLASS 173X

ACT BW: 70    ADJ WW: 807    ADJ YW:

CONSIGNEE BY: COYOTE HILLS RANCH, CHATTANOOGA, OK  
Be sure and take a look at this double homozygous stout made heifer  
by CHR Hard Rocks.

	EPDs	%Rnk
CE:	11	40
BW:	.8	45
WW:	85	10
YW:	136	10
MK:	26	40
TM:	69	10
CM:	4	85
SC:	1.15	30
DC:	6	95
YG:	.01	90
CW:	53	10
RE:	.52	70
MB:	.5	15
FAT:	0	70
\$MI:	74	10

## 8A CHR LIBBI 108L

COW

PERCENTAGE(78/70.3) • HOMO POLLED (P-3) • HOMO BLACK (P-2)  
09/13/2023 • KQ 108L • NXF2798943

— BLACK DIAMOND  
GPFF BLAQUE RULON  
— QUAIL RUN RAMONA BP

— MAGS ZODIAC  
CHR DANDY 125D  
— CHR XCELLANT ALIBI 162X

ACT BW: 74    ADJ WW: 746    ADJ YW:

CONSIGNEE BY: COYOTE HILLS RANCH, CHATTANOOGA, OK  
This Rulon heifer calf is one to check out. She's out of a good  
numbered granddaughter of JCL Lodestar. Two bloodlines that hold  
the test of time.

	EPDs	%Rnk
CE:	11	55
BW:	.5	60
WW:	60	40
YW:	97	30
MK:	21	65
TM:	52	45
CM:	6	75
SC:	.45	85
DC:	9	85
YG:	-.22	35
CW:	18	90
RE:	.69	50
MB:	.02	90
FAT:	-.02	40
\$MI:	51	90

# FALL PAIRS



LOT 10



LOT 10A

## 9 CHR FANCY GIRL 003F ET

COW

LIM-FLEX(51/45.9) • HOMO POLLED (T) • HOMO BLACK (P-1)  
01/18/2018 • KQ 003F • LFF2149468

— CONNEALY CONSENSUS 7229  
MAGS ALI  
— MAGS YOKO

— LH U HAUL 135U  
AUTO BLISS 265Y  
— WLR UGLY BETTY 432U

ACT BW: 80    ADJ WW: 547    ADJ YW: 766

CONSIGNED BY: COYOTE HILLS RANCH, CHATTANOOGA, OK  
AI'd 11/30/23 to CHR Hard Rocks 151H; PE'd 12/12/23 to sale day to  
CHR Hard Rocks 151H; Preg checked 3/20/24; 105 days safe.  
Fancy Girl fits this cow! She's a broody, functionally made daughter  
of MAGS Ali and AUTO Bliss who makes her calves with the same  
thickness she has.

	EPDs	%Rnk
CE:	9	70
BW:	2.4	85
WW:	79	10
YW:	126	10
MK:	18	90
TM:	58	45
CM:	5	70
SC:	1.3	10
DC:	14	30
YG:	.07	95
CW:	51	5
RE:	.32	90
MB:	.6	4
FAT:	0	75
\$MI:	75	3

GE-EPDs

## 10 LFL FATIMA 8014F ET

COW

PUREBRED(87/77.6) • HET POLLED (T) • HOMO BLACK (T)  
03/05/2018 • BLAW 8014F • NPF2149876

— WZRK PRIMESTAR 861P  
WULFS XCLUSIVE 2458X  
— WULFS MISSIVE 2258M

— DHVO DEUCE 132R  
DJ XECUTIVE PRIVILEGE  
— DJ UPTOWN GIRL

ACT BW: 77    ADJ WW: 812    ADJ YW: 1044  
ADJ RIB FAT: 0.3    ADJ REA: 13.74    ADJ \$IMF: 5.715

CONSIGNED BY: LAWRENCE FAMILY LIMOUSIN, ANTON, TX  
AI'd 12/5/23 to Wulfs Joint Venture G579J; PE'd 12/15/23-2/9/24  
to LFL Judson 1011 J.  
LFL Fatima is a daughter of the Xecutive Privilege cow; making her a  
maternal sister to LFL Dividend, the senior herd sire at both Lawrence  
Family Limousin and Coyote Hills Ranch. Fatima ranks in the top 2% for  
\$MI & MB, 4% for YW, 5% for WW and 20% for DC.

	EPDs	%Rnk
CE:	10	45
BW:	3.7	95
WW:	74	5
YW:	113	4
MK:	19	85
TM:	56	35
CM:	5	60
SC:	.5	40
DC:	15	20
YG:	-.17	95
CW:	26	25
RE:	.49	95
MB:	.25	2
FAT:	-.03	95
\$MI:	63	2

GE-EPDs

## 9A CHR LEGAL LADY

COW

LIM-FLEX(57/50.9) • HOMO POLLED (P-1) • HOMO BLACK (P-2)  
09/14/2023 • KQ 133L • LFF2798944

— MAGS FAULTLESS 154F  
CHR HARD ROCKS 151H  
— CHR CRICKET 161C

— MAGS ALI  
CHR FANCY GIRL 003F ET  
— AUTO BLISS 265Y

ACT BW: 76    ADJ WW: 826    ADJ YW:

CONSIGNED BY: COYOTE HILLS RANCH, CHATTANOOGA, OK  
Legal Lady is out of the first crop of our CHR Hard Rocks calves, and we  
have been pleased with them all.

	EPDs	%Rnk
CE:	11	40
BW:	1.2	55
WW:	90	2
YW:	142	4
MK:	24	60
TM:	68	15
CM:	5	70
SC:	1.25	20
DC:	13	50
YG:	.09	95
CW:	58	3
RE:	.44	85
MB:	.74	2
FAT:	.01	85
\$MI:	83	1

## 10A LFL LUKE 3174 L

BULL

LIM-FLEX(72/64.7) • HOMO POLLED (T) • HOMO BLACK (P-2)  
10/09/2023 • BLAW 3174L • LFM2797905

— MAGS CABLE  
LFL ESQUIRE 7084E ET  
— AUTO BLISS 265Y

— WULFS XCLUSIVE 2458X  
LFL FATIMA 8014F ET  
— DJ XECUTIVE PRIVILEGE

ACT BW: 78    ADJ WW: 711    ADJ YW:

CONSIGNED BY: LAWRENCE FAMILY LIMOUSIN, ANTON, TX  
LFL Luke is a double homozygous herd sire prospect by LFL Esquire.

	EPDs	%Rnk
CE:	12	30
BW:	1.6	65
WW:	73	35
YW:	114	40
MK:	19	95
TM:	56	70
CM:	7	35
SC:	.55	85
DC:	17	5
YG:	-.03	80
CW:	28	75
RE:	.4	85
MB:	.47	20
FAT:	.01	85
\$MI:	70	20

GE-EPDs

# FALL PAIRS



LOT 12

## 11 CHR FAIRWELL 140F

**COW** PUREBRED(87/78) • HOMO POLLED (P-2) • HOMO BLACK (P-2)  
09/04/2018 • KQ 140F • NPF2159563

— WULF'S ZIPLOCK N922Z  
**LFLC DENVER 857D**  
— LFLC ANNABELLE 857A

— LH RODEMASTER 338R  
**CHR WINDSTORM 203W**  
— CHR SILKY ROSE 177S

ACT BW: 78    ADJ WW: 733    ADJ YW: 909

CONSIGNEE BY: COYOTE HILLS RANCH, CHATTANOOGA, OK  
AI'd 11/30/23 to LFL Deluxe Edition; PE'd 12/12/23 to sale day to  
CHR Hard Rocks 151H; Preg checked 3/20/24; 90 days safe.  
Fairwell is a purebred cow that we hate to see go. She's a great mama  
cow with the best disposition.

	EPDs	%Rnk
CE:	6	90
BW:	3.4	90
WW:	74	5
YW:	114	4
MK:	12	95
TM:	49	70
CM:	4	75
SC:	.6	25
DC:	12	55
YG:	-.32	95
CW:	30	15
RE:	.7	95
MB:	-.03	25
FAT:	-.07	60
\$MI:	56	15

## 12 LFL FORTUNE HUNTER 8109 F

**COW** LIM-FLEX(60/54.3) • HOMO POLLED (T) • HOMO BLACK (T)  
09/18/2018 • BLAW 8109F • LFF2157266

— RLBH AIR FORCE ONE  
**LFL DELUXE EDITION 6029D ET**  
— LFL ZHA ZHA 2075Z

— LFL BOOMERANG 4050B  
**LFL DAFFODIL 6092 D**  
— LFL BEATRICE 4110 B

ACT BW: 55    ADJ WW: 604    ADJ YW: 926  
ADJ RIB FAT: 0.44    ADJ REA: 10.35    ADJ \$IMF: 5.235

CONSIGNEE BY: LAWRENCE FAMILY LIMOUSIN, ANTON, TX  
AI'd 12/5/23 to Ratliff Jump Start 340J ET; PE'd 12/15/23-2/29/24  
to LFL Jetson 1300J ET.  
LFL Fortune Hunter is a moderate-framed, easy fleshing daughter of  
LFL Deluxe Edition. The Deluxe Edition daughters are really good cows  
with super good disposition!

	EPDs	%Rnk
CE:	12	30
BW:	-1	15
WW:	56	85
YW:	86	85
MK:	17	95
TM:	45	95
CM:	5	70
SC:	.9	45
DC:	14	30
YG:	-.04	80
CW:	15	90
RE:	.25	95
MB:	.11	80
FAT:	.01	85
\$MI:	51	90

## 11A CHR LATER 153L

**COW** PERCENTAGE(77/69.1) • HOMO POLLED (P-3) • HOMO BLACK (P-3)  
10/09/2023 • KQ 153L • NXF2798945

— MAGS AVIATOR  
**LFL DIVIDEND 6084D ET**  
— DJ XECUTIVE PRIVILEGE

— LFLC DENVER 857D  
**CHR FAIRWELL 140F**  
— CHR WINDSTORM 203W

ACT BW: 77    ADJ WW: 627    ADJ YW: 909

CONSIGNEE BY: COYOTE HILLS RANCH, CHATTANOOGA, OK  
With her good numbers this double homozygous daughter of Dividend  
is one to take a look at.

	EPDs	%Rnk
CE:	9	80
BW:	1.4	75
WW:	63	35
YW:	104	25
MK:	21	65
TM:	52	45
CM:	6	75
SC:	.25	95
DC:	16	5
YG:	-.14	50
CW:	22	85
RE:	.42	85
MB:	.26	60
FAT:	-.02	40
\$MI:	60	50

## 12A LFL LAWYER 3230 L

**BULL** LIM-FLEX(59/53) • HOMO POLLED (P-3) • HOMO BLACK (P-2)  
11/22/2023 • BLAW 3230L • LFM2797958

— MAGS CABLE  
**LFL ESQUIRE 7084E ET**  
— AUTO BLISS 265Y

— LFL DELUXE EDITION 6029D ET  
**LFL FORTUNE HUNTER 8109 F**  
— LFL DAFFODIL 6092 D

ACT BW: 69    ADJ WW: 739    ADJ YW: 926

CONSIGNEE BY: LAWRENCE FAMILY LIMOUSIN, ANTON, TX  
LFL Lawyer 3230 L is a really complete son of LFL Esquire that ratio'd  
104 on WW.

	EPDs	%Rnk
CE:	13	20
BW:	-1.9	5
WW:	58	90
YW:	89	90
MK:	18	95
TM:	47	95
CM:	7	35
SC:	.75	70
DC:	15	20
YG:	-.01	85
CW:	15	95
RE:	.21	95
MB:	.28	50
FAT:	.01	85
\$MI:	58	75

# FALL PAIRS



LOT 13

LOT 13A



LOT 14

LOT 14A

## 13 CHR FAMOUS GIRL 181F

COW LIM-FLEX(25/22.7) • HOMO POLLED (P-3) • HOMO BLACK (P-2)  
09/23/2018 • KQ 181F • LFF2159572

— JCL LODESTAR 27L  
LH BLOCKBUSTER 124B ET  
— VERMILION E BLACKBIRD9546

— GARDENS MATRIX  
GREEN GARDEN JILT G7  
— GREEN GARDEN JILT D6 S1

ACT BW: 70    ADJ WW: 632    ADJ YW: 819

CONSIGNEE BY: COYOTE HILLS RANCH, CHATTANOOGA, OK  
AI'd 11/30/23 to LFL Esquire; PE'd 12/12/23-2/9/24 to CHR Free Agent 215F; PE'd 3/4/24 to sale day to CHR Hard Rocks; Preg checked 3/20/24; 90-100 days safe.

This low birth weight cow has the right CED, WW and YW EPDs and is one everyone should be bidding on!

	EPDs	%Rnk
CE:	12	30
BW:	-.7	20
WW:	63	60
YW:	104	45
MK:	27	35
TM:	58	45
CM:	9	10
SC:	.85	55
DC:	10	75
YG:	.11	95
CW:	29	55
RE:	.11	95
MB:	.51	10
FAT:	.02	95
\$MI:	67	20

## 14 LFL FATEFUL 8123 F

COW LIM-FLEX(53/47.6) • HOMO POLLED (P-1) • HOMO BLACK (T)  
09/26/2018 • BLAW 8123F • LFF2157274

— EBFL YPSILANTI 420Y  
LFL COZMO 5011C ET  
— DJ XECUTIVE PRIVILEGE

— MAGS TRAILBLAZER  
LFL 0084 X  
— LFL UP FRONT 8048U

ACT BW: 72    ADJ WW: 722    ADJ YW: 904  
ADJ RIB FAT: 0.49    ADJ REA: 11.45    ADJ SIMF: 4.465

CONSIGNEE BY: LAWRENCE FAMILY LIMOUSIN, ANTON, TX  
AI'd 12/5/23 to Ratliff Jump Start 340J ET; PE'd 12/15/23-2/29/24 to LFL Jetson 1300J ET.

LFL Fateful is also a moderate-framed, easy fleshing cow with a near perfect udder.

	EPDs	%Rnk
CE:	12	30
BW:	-.6	20
WW:	64	55
YW:	89	80
MK:	29	20
TM:	61	35
CM:	8	20
SC:	1.3	10
DC:	16	10
YG:	-.12	60
CW:	12	95
RE:	.68	40
MB:	.11	80
FAT:	.04	95
\$MI:	54	80

## 13A CHR LINX 148L

BULL LIM-FLEX(38/34.3) • DOUBLE POLLED • HOMO BLACK (P-3)  
10/01/2023 • KQ 148L • LFM2798946

— MAGS ALI  
CHR FREE AGENT 215F ET  
— AUTO BLISS 265Y

— LH BLOCKBUSTER 124B ET  
CHR FAMOUS GIRL 181F  
— GREEN GARDEN JILT G7

ACT BW: 79    ADJ WW: 879    ADJ YW: 819

CONSIGNEE BY: COYOTE HILLS RANCH, CHATTANOOGA, OK  
CHR Linx could make your next herd bull. With the right numbers and eye appeal take him home and feed him out.

	EPDs	%Rnk
CE:	10	55
BW:	1.3	60
WW:	82	10
YW:	125	20
MK:	24	60
TM:	65	20
CM:	6	55
SC:	.97	50
DC:	12	65
YG:	.07	95
CW:	39	35
RE:	.29	95
MB:	.48	15
FAT:	.01	85
\$MI:	72	15

## 14A LFL LING LING 3206 L

COW LIM-FLEX(51/43.7) • HOMO POLLED (P-2) • HOMO BLACK (P-2)  
10/28/2023 • BLAW 3206L • LFF2797929

— JINDRA ACCLAIM  
LFL GENETIC VALUES 9148G ET  
— LVLS 9066U

— LFL COZMO 5011C ET  
LFL FATEFUL 8123 F  
— LFL 0084 X

ACT BW: 66    ADJ WW: 613    ADJ YW: 819

CONSIGNEE BY: LAWRENCE FAMILY LIMOUSIN, ANTON, TX

	EPDs	%Rnk
CE:	14	10
BW:	-3.1	2
WW:	53	95
YW:	86	95
MK:	29	20
TM:	55	75
CM:	10	5
SC:	1	35
DC:	13	50
YG:	.04	95
CW:	31	65
RE:	.33	95
MB:	.48	15
FAT:	.02	90
\$MI:	63	50

# FALL PAIRS



LH BELLE 015B • Maternal sib to Lot 15



LOT 16



LOT 16A

## 15 CHR GINGER GIRL 102G ET

COW LIM-FLEX(50/43.8) • HOMO POLLED (P-1) • HOMO BLACK (P-2)  
09/01/2019 • KQ 102G • LFF2272685

— 3F EPIC 4631  
EXAR EPIC 6072B  
— EXAR ABIGALE 4102

— DHVO DEUCE 132R  
PBRS TOUCH ME GENTLY 798T  
— CARROUSELS PINA COLADA

ACT BW: 76    ADJ WW: 771    ADJ YW: 1015

CONSIGNED BY: COYOTE HILLS RANCH, CHATTANOOGA, OK  
AI'd 11/30/2023 to MAGS Faultless; PE'd 12/12/23-2/9/24 to CHR  
Free Agent 215F; PE'd 3/4/24 to sale day to CHR Hard Rocks 151H;  
Preg checked 3/20/24; 75 days safe.

Ginger Girl is a known daughter of the popular cow, PBRS Toch  
Me Gently 798T which would make her a maternal sister to Colt  
Cunningham's famous LH Belle 015B cow.

	EPDs	%Rnk
CE:	11	40
BW:	1.8	70
WW:	90	1
YW:	160	1
MK:	24	55
TM:	69	10
CM:	9	10
SC:	1.1	25
DC:	13	40
YG:	.07	95
CW:	61	1
RE:	.48	70
MB:	.28	45
FAT:	0	75
\$MI:	67	20

## 16 CHR GEORGIA PEACH 190G

COW LIM-FLEX(75/67.2) • HOMO POLLED (P-1) • HOMO BLACK (P-1)  
10/13/2019 • KQ 190G • LFF2271888

— MAGS WINSTON  
MAGS EAGLE  
— MAGS WEB OF DECEIT

— GPFF BLAQUE RULON  
KRVN SAVANAH 097S  
— TL HI-ROSE 917J

ACT BW: 70    ADJ WW: 626    ADJ YW: 926

CONSIGNED BY: COYOTE HILLS RANCH, CHATTANOOGA, OK  
AI'd 11/30/23 to CHR Hard Rocks 151H. PE'd 12/12/23 to sale day to  
CHR Hard Rocks 151H. Preg checked 3/20/24; 90 days safe.  
Georgia Peach is a peach in my book! She's a stylish, young, double  
homozygous daughter of the now deceased MAGS Eagle. Be sure and  
check her out.

	EPDs	%Rnk
CE:	10	55
BW:	1.8	70
WW:	66	45
YW:	105	45
MK:	21	75
TM:	54	65
CM:	6	55
SC:	.85	55
DC:	10	75
YG:	-.09	70
CW:	27	60
RE:	.48	70
MB:	.18	65
FAT:	0	75
\$MI:	57	65

## 15A CHR LEXIE LOU 144L

COW LIM-FLEX(56/50.1) • HOMO POLLED (P-3) • HOMO BLACK (P-3)  
09/26/2023 • KQ 144L • LFF2798948

— MAGS EAGLE  
CHR GOOD FELLA 137G  
— CHR BUNNY 043B

— EXAR EPIC 6072B  
CHR GINGER GIRL 102G ET  
— PBRS TOUCH ME GENTLY 798T

ACT BW: 78    ADJ WW: 831    ADJ YW:

CONSIGNED BY: COYOTE HILLS RANCH, CHATTANOOGA, OK  
This heifer calf has genetics on the top and bottom that are well known  
here at CHR. Lexie Lou has the numbers and is double homozygous.

	EPDs	%Rnk
CE:	10	55
BW:	2.6	85
WW:	89	3
YW:	150	2
MK:	25	50
TM:	69	10
CM:	7	35
SC:	1	35
DC:	14	35
YG:	.04	95
CW:	58	3
RE:	.58	60
MB:	.26	55
FAT:	.01	85
\$MI:	66	30

## 16A CHR LEMON DROP 112L

COW LIM-FLEX(66/59.5) • HOMO POLLED (P-3) • HOMO BLACK (P-2)  
09/05/2023 • KQ 112L • LFF2798950

— MAGS CABLE  
LFL ESQUIRE 7084E ET  
— AUTO BLISS 265Y

— MAGS EAGLE  
CHR GEORGIA PEACH 190G  
— KRVN SAVANAH 097S

ACT BW: 77    ADJ WW: 697    ADJ YW:

CONSIGNED BY: COYOTE HILLS RANCH, CHATTANOOGA, OK  
CHR Lemon Drop could be a show heifer prospect if you so choose. She  
will for sure make you a great cow!

	EPDs	%Rnk
CE:	11	40
BW:	1.7	70
WW:	70	45
YW:	116	35
MK:	20	90
TM:	55	75
CM:	7	35
SC:	.72	70
DC:	14	35
YG:	-.04	80
CW:	33	55
RE:	.44	85
MB:	.39	30
FAT:	0	70
\$MI:	66	35

# FALL PAIRS



**CHR GOOD FELLA 137G** • Sire of Lot 17A



**LOT 18**



**LOT 18A**

## 17 JBPJ GEMSTONE 9114G ET

**COW**

LIM-FLEX(62/55.7) • HET POLLED (T) • HOMO BLACK (P-2)  
10/28/2019 • JBPJ 9114G • LFF2272535

— MAGS APPLESEED  
**MAGS CABLE**  
— MAGS ZEQUIN

— DHVO DEUCE 132R  
**DJ CASSIE**  
— DJ UPTOWN GIRL

ACT BW: 68    ADJ WW: 575    ADJ YW: 871

CONSIGNED BY: COYOTE HILLS RANCH, CHATTANOOGA, OK  
AI'd 11/30/23 to CHR Hard Rocks 151H; PE'd 12/12/23 to sale day to  
CHR Hard Rocks 151H.

This MAGS Cable daughter is one to check out. She comes with great  
style and makes a brood cow all in one.

	EPDs	%Rnk
CE:	11	40
BW:	2.4	85
WW:	69	35
YW:	110	35
MK:	16	95
TM:	51	80
CM:	7	35
SC:	1.2	15
DC:	15	20
YG:	-.11	65
CW:	34	40
RE:	.56	60
MB:	.37	25
FAT:	-.01	60
\$MI:	65	25

## 18 CHR HARLIE 028H

**COW**

LIM-FLEX(53/47.2) • HOMO POLLED (T) • HOMO BLACK (P-2)  
03/15/2020 • KQ 028H • LFF2288605

— PVF INSIGHT 0129  
**DHIL COLT 5793C**  
— PBRS TOUCH ME GENTLY 798T

— MAGS ANCHOR  
**PBRS CLICKS ET**  
— MAGS WEB OF DECEIT

ACT BW: 72    ADJ WW: 717    ADJ YW: 916

CONSIGNED BY: COYOTE HILLS RANCH, CHATTANOOGA, OK  
AI'd 11/30/23 to LFL Deluxe Edition; PE'd 12/12/23-2/9/24 to CHR  
Free Agent; PE'd 3/4/24 to sale day to CHR Hard Rocks; Preg  
checked 3/20/24; 65 days safe.

This young, double homozygous Colt daughter has a really fancy  
Dividend daughter at side. Take a look at both mother and daughter,  
they are quite the pair!

	EPDs	%Rnk
CE:	8	85
BW:	1.8	70
WW:	82	5
YW:	130	10
MK:	32	10
TM:	72	4
CM:	5	70
SC:	1	35
DC:	12	55
YG:	-.12	60
CW:	48	10
RE:	.54	65
MB:	.06	85
FAT:	-.04	25
\$MI:	58	60

## 17A CHR LIMESTONE 151L

**BULL**

LIM-FLEX(62/56.1) • DOUBLE POLLED • HOMO BLACK (P-3)  
10/08/2023 • KQ 151L • LFM2798951

— MAGS EAGLE  
**CHR GOOD FELLA 137G**  
— CHR BUNNY 043B

— MAGS CABLE  
**JBPJ GEMSTONE 9114G ET**  
— DJ CASSIE

ACT BW: 74    ADJ WW: 602    ADJ YW:

CONSIGNED BY: COYOTE HILLS RANCH, CHATTANOOGA, OK  
CHR Limestone is a known son of CHR Good Fella who topped our bull  
sale a few years back.

	EPDs	%Rnk
CE:	11	40
BW:	1.6	65
WW:	64	70
YW:	105	60
MK:	21	85
TM:	53	85
CM:	6	55
SC:	1.05	35
DC:	14	35
YG:	-.05	75
CW:	37	40
RE:	.51	75
MB:	.3	45
FAT:	0	70
\$MI:	61	60

## 18A CHR LET HER ROLL 137L

**COW**

LIM-FLEX(60/53.7) • HOMO POLLED (P-1) • HOMO BLACK (P-3)  
10/17/2023 • KQ 137L • LFF2798952

— MAGS AVIATOR  
**LFL DIVIDEND 6084D ET**  
— DJ XECUTIVE PRIVILEGE

— DHIL COLT 5793C  
**CHR HARLIE 028H**  
— PBRS CLICKS ET

ACT BW: 67    ADJ WW: 921    ADJ YW:

CONSIGNED BY: COYOTE HILLS RANCH, CHATTANOOGA, OK  
CHR Let Her Roll 137L is the full package. Pretty and stylish with a  
pedigree that will improve any herd. Being double homozygous and  
great numbered is icing on the cake.

	EPDs	%Rnk
CE:	10	55
BW:	1.3	60
WW:	79	15
YW:	129	15
MK:	31	10
TM:	70	10
CM:	7	35
SC:	.45	90
DC:	16	10
YG:	-.04	80
CW:	36	45
RE:	.41	85
MB:	.28	50
FAT:	-.01	55
\$MI:	65	40

# FALL PAIRS



LOT 19



LOT 20

## 19 LFL JOJO 1214J ET

COW LIM-FLEX(50/44.6) • HOMO POLLED (T) • HOMO BLACK (P-1)  
03/11/2021 • BLAW 1214J • LFF2447071

— BASIN PAYWEIGHT 1682  
**POSS MAVERICK**  
— POSS PRIDE 5163

— GPFF BLAQUE RULON  
**ALMA JO DHVO 723R**  
— AMY JO DHAN 20L

ACT BW: 69    ADJ WW: 625    ADJ YW:   
ADJ RIB FAT: 0.4    ADJ REA: 13.54    ADJ \$IMF: 4.535

CONSIGNED BY: LAWRENCE FAMILY LIMOUSIN, ANTON, TX  
AI'd 11/12/23 to Ratliff Jump Start 340J ET; PE'd 11/25/23-2/29/224 to LFL Judson 1011J.

LFL JoJo is a first-calf heifer and daughter of the popular and now deceased DHVO Alma Jo. JoJo is moderate growth with above average carcass traits—ranking in the top 35% for five traits.

GE-EPDS

	EPDs	%Rnk
CE:	9	70
BW:	.7	45
WW:	67	45
YW:	104	45
MK:	28	30
TM:	61	35
CM:	3	95
SC:	.75	65
DC:	16	10
YG:	-.12	60
CW:	31	50
RE:	.54	65
MB:	.36	30
FAT:	-.01	60
\$MI:	64	30

## 20 CHR JIFFY POP 024J

COW LIM-FLEX(75/66.3) • HOMO POLLED (P-3) • HOMO BLACK (P-1)  
04/08/2021 • KQ 024J • LFF2430911

— PVF INSIGHT 0129  
**DHIL COLT 5793C**  
— PBRs TOUCH ME GENTLY 798T

— WULFS XCLUSIVE 2458X  
**CHR DESTINY 143D**  
— KRvn PINK ROSE 230P

ACT BW: 76    ADJ WW: 704    ADJ YW: 885

CONSIGNED BY: COYOTE HILLS RANCH, CHATTANOOGA, OK  
AI'd 11/30/23 to Wulfs Joint Venture G579J ; PE'd 12/12/23 to sale day to CHR Hard Rocks 151H; Preg checked 3/20/24; 70 days safe. This three-quarter-blood Lim-Flex is a first-calf heifer that you need to mark. She has raised a stout bull calf by LFL Genetic Values.

	EPDs	%Rnk
CE:	6	95
BW:	4.3	95
WW:	85	3
YW:	132	5
MK:	29	20
TM:	71	5
CM:	4	85
SC:	.5	80
DC:	11	65
YG:	-.26	25
CW:	40	20
RE:	.84	20
MB:	.12	75
FAT:	-.05	15
\$MI:	62	40

## 19A LFL LUMBER JACK 3164 L

BULL LIM-FLEX(50/42.2) • HOMO POLLED (P-2) • HOMO BLACK (P-2)  
09/28/2023 • BLAW 3164L • LFM2797896

— JINDRA ACCLAIM  
**LFL GENETIC VALUES 9148G ET**  
— LVLS 9066U

— POSS MAVERICK  
**LFL JOJO 1214J ET**  
— ALMA JO DHVO 723R

ACT BW: 78    ADJ WW: 681    ADJ YW:   
ADJ RIB FAT: 0.4    ADJ REA: 13.54    ADJ \$IMF: 4.535

CONSIGNED BY: LAWRENCE FAMILY LIMOUSIN, ANTON, TX  
LFL Lumber Jack 3164 L is a double homozygous son of LFL Genetic Values that ranks in the top 1% for MB, 3% for DC and 4% for \$MI.

GE-EPDS

	EPDs	%Rnk
CE:	11	40
BW:	-.5	20
WW:	64	70
YW:	110	50
MK:	28	25
TM:	60	50
CM:	7	35
SC:	.72	70
DC:	18	3
YG:	.07	95
CW:	48	15
RE:	.35	90
MB:	.76	1
FAT:	.01	85
\$MI:	77	4

## 20A CHR LONG TALL TEXAN 104L

BULL LIM-FLEX(62/53.1) • DOUBLE POLLED • HOMO BLACK (P-2)  
09/01/2023 • KQ 104L • LFM2798954

— JINDRA ACCLAIM  
**LFL GENETIC VALUES 9148G ET**  
— LVLS 9066U

— DHIL COLT 5793C  
**CHR JIFFY POP 024J**  
— CHR DESTINY 143D

ACT BW: 72    ADJ WW: 812    ADJ YW:   
ADJ RIB FAT: 0.4    ADJ REA: 13.54    ADJ \$IMF: 4.535

CONSIGNED BY: COYOTE HILLS RANCH, CHATTANOOGA, OK  
CHR Long Tall Texan 104L is sure to be a calving ease, low birth weight herd sire...check him out!

	EPDs	%Rnk
CE:	11	40
BW:	1.5	65
WW:	78	20
YW:	130	15
MK:	29	20
TM:	68	15
CM:	8	20
SC:	.6	80
DC:	13	50
YG:	-.11	60
CW:	51	10
RE:	.65	50
MB:	.47	20
FAT:	-.03	30
\$MI:	72	15

# FALL PAIRS



LOT 22



LOT 22A

## 21 CHR JENNI SUE 017J

COW LIM-FLEX(54/48.6) • HOMO POLLED (P-3) • HOMO BLACK (P-3)  
03/11/2021 • RHOT 017J • LFF2430908

— PVF INSIGHT 0129  
DHIL COLT 5793C  
— PBRs TOUCH ME GENTLY 798T

— MAGS EAGLE  
LH BENNI SUE 034B  
— LH WITCHEY WOMAN 045W

ACT BW: 72    ADJ WW: 599    ADJ YW: 770

CONSIGNED BY: ROSS TURNER, OOLOGAH, OK

AI'd 11/30/23 to MAGS Faultless; PE'd 12/12/23 to sale day to CHR Hard Rocks 151H; Preg checked 3/20/24; 100 days safe.

This young cow is a daughter of Ross' first show heifer, Benni Sue. This double homozygous beauty has power on both the top and bottom of her pedigree.

	EPDs	%Rnk
CE:	8	85
BW:	2.8	90
WW:	79	10
YW:	129	10
MK:	30	20
TM:	70	10
CM:	6	55
SC:	.85	55
DC:	12	55
YG:	-.07	75
CW:	48	10
RE:	.55	60
MB:	.16	70
FAT:	-.02	45
\$MI:	61	50

## 22 LFL JUDITH 1110 J

COW PERCENTAGE(77/69.4) • HOMO POLLED (P-2) • HOMO BLACK (T)  
06/10/2021 • BLAW 1110J • NXF2433283

— MAGS AVIATOR  
LFL DIVIDEND 6084D ET  
— DJ XECUTIVE PRIVILEGE

— KRNV PACESETTER 053P  
LFL TONYA 7003 T  
— LFL DREAM GIRL 4095P

ACT BW: 72    ADJ WW: 560    ADJ YW:     
ADJ RIB FAT: 0.21    ADJ REA: 10.91    ADJ SIMF: 3.55

CONSIGNED BY: LAWRENCE FAMILY LIMOUSIN, ANTON, TX

AI'd 12/6/23 to Wulfs Joint Venture G579J; PE'd 12/15/23-2/29/24 to LFL Judson 1011J.

LFL Judith is a 77% Dividend daughter that is a first-calf heifer. She boasts moderate growth and moderate carcass traits. She has done an above average job of raising her first calf.

	EPDs	%Rnk
CE:	9	65
BW:	.8	45
WW:	61	55
YW:	98	45
MK:	26	35
TM:	56	45
CM:	5	65
SC:	-.05	95
DC:	14	30
YG:	-.26	65
CW:	26	45
RE:	.84	50
MB:	.21	30
FAT:	-.02	75
\$MI:	58	35

## 21A CHR RHOT LIONS DEN 152L

BULL LIM-FLEX(58/52.4) • DOUBLE POLLED • DOUBLE BLACK  
10/09/2023 • RHOT 152L • LFM2798953

— MAGS AVIATOR  
CHR GOVERNOR 017G ET  
— AUTO BLISS 265Y

— DHIL COLT 5793C  
CHR JENNI SUE 017J  
— LH BENNI SUE 034B

ACT BW: 76    ADJ WW: 866    ADJ YW:   

CONSIGNED BY: ROSS TURNER, OOLOGAH, OK

Lion's Den has a packed pedigree that alone should give you a reason to study him.

	EPDs	%Rnk
CE:	11	40
BW:	2.2	80
WW:	82	10
YW:	135	10
MK:	25	50
TM:	66	20
CM:	7	35
SC:	.38	95
DC:	13	50
YG:	-.04	80
CW:	45	20
RE:	.56	65
MB:	.31	45
FAT:	-.01	55
\$MI:	67	30

## 22A LFL LEMON TART 3190 L

COW LIM-FLEX(63/54.6) • HOMO POLLED (P-3) • HOMO BLACK (P-2)  
10/19/2023 • BLAW 3190L • LFF2797915

— JINDRA ACCLAIM  
LFL GENETIC VALUES 9148G ET  
— LVLS 9066U

— LFL DIVIDEND 6084D ET  
LFL JUDITH 1110 J  
— LFL TONYA 7003 T

ACT BW: 76    ADJ WW: 697    ADJ YW:   

CONSIGNED BY: LAWRENCE FAMILY LIMOUSIN, ANTON, TX

If you like 'em good looking with big numbers, don't miss this double homozygous daughter of LFL Genetic Values.

	EPDs	%Rnk
CE:	11	40
BW:	1.7	70
WW:	75	30
YW:	134	10
MK:	27	30
TM:	65	20
CM:	7	35
SC:	.33	95
DC:	15	20
YG:	-.17	45
CW:	61	2
RE:	.86	25
MB:	.53	10
FAT:	-.04	20
\$MI:	74	10



# FALL PAIRS



LOT 23



LOT 23A

## 23 LFL JENNESSA 1111 J

COW LIM-FLEX(57/50.9) • HOMO POLLED (T) • HOMO BLACK (T)  
06/14/2021 • BLAW 1111J • LFF2433284

— MAGS AVIATOR  
LFL EDDIE 7019 E  
— LFL CANDY 5040C ET

— MAGS Y-AXIS  
LFL FRAN 8027F ET  
— MAGS CANDREA

ACT BW: 67    ADJ WW: 579    ADJ YW:     
ADJ RIB FAT: 0.26    ADJ REA: 10.47    ADJ SIMF: 3.99

CONSIGNED BY: LAWRENCE FAMILY LIMOUSIN, ANTON, TX

AI'd 11/12/23 to Ratliff Jump Start 340J ET; PE'd 11/25/23-2/29/24 to LFL Esquire 7084E ET.

LFL Jannessa is a first-calf heifer that has done a great job with her first calf.

GE-EPDs

	EPDs	%Rnk
CE:	8	85
BW:	-1	30
WW:	65	50
YW:	91	75
MK:	28	30
TM:	60	35
CM:	4	85
SC:	.65	75
DC:	15	20
YG:	-.04	80
CW:	30	50
RE:	.45	75
MB:	.17	65
FAT:	.01	85
\$MI:	56	75

## 24 CHR JEMMA 128J

COW LIM-FLEX(54/48.7) • HOMO POLLED • HOMO BLACK  
09/04/2021 • KQ 128J • LFF2494290

— MAGS APPLESEED  
MAGS CABLE  
— MAGS ZEQUIN

— JMFA RODEMASTER 294Z  
CHR GABRIELLA 167G  
— CHR DARN CAT 163D

ACT BW: 75    ADJ WW: 598    ADJ YW: 911

CONSIGNED BY: COYOTE HILLS RANCH, CHATTANOOGA, OK

AI'd 11/30/23 to LFL Dividend; PE'd 12/12/23 to sale day to CHR Hard Rocks 151H; Preg checked 3/20/24; 100 days safe.

This first-calf heifer has done a wonderful job raising a big stout heifer calf—she will do you a good job as well.

	EPDs	%Rnk
CE:	8	85
BW:	2.3	80
WW:	79	10
YW:	126	10
MK:	30	20
TM:	69	10
CM:	3	95
SC:	.88	55
DC:	13	40
YG:	-.01	85
CW:	44	15
RE:	.44	80
MB:	.46	15
FAT:	-.01	60
\$MI:	71	10

## 23A LFL LAYLA 3178 L

COW LIM-FLEX(53/45.4) • HOMO POLLED (P-2) • HOMO BLACK (P-2)  
10/14/2023 • BLAW 3178L • LFF2797907

— JINDRA ACCLAIM  
LFL GENETIC VALUES 9148G ET  
— LVLS 9066U

— LFL EDDIE 7019 E  
LFL JENNESSA 1111 J  
— LFL FRAN 8027F ET

ACT BW: 77    ADJ WW: 735    ADJ YW:   

CONSIGNED BY: LAWRENCE FAMILY LIMOUSIN, ANTON, TX

LFL Layla 3178 L is a double homozygous heifer calf that ratio'd 112 on WW.

	EPDs	%Rnk
CE:	11	40
BW:	.4	35
WW:	70	45
YW:	113	40
MK:	29	20
TM:	64	25
CM:	7	35
SC:	.68	80
DC:	15	20
YG:	0	85
CW:	50	10
RE:	.5	75
MB:	.49	15
FAT:	0	70
\$MI:	69	20

## 24A CHR LACES N ROSES 111L

COW LIM-FLEX(60/54.4) • HOMO POLLED • HOMO BLACK  
09/05/2023 • KQ 111L • LFF2798955

— MAGS AVIATOR  
LFL DIVIDEND 6084D ET  
— DJ XECUTIVE PRIVILEGE

— MAGS CABLE  
CHR JEMMA 128J  
— CHR GABRIELLA 167G

ACT BW: 70    ADJ WW: 783    ADJ YW:   

CONSIGNED BY: COYOTE HILLS RANCH, CHATTANOOGA, OK

This big stout Dividend daughter has got brood cow written all over her. With two well-known Magness bred bulls on both sides of her pedigree, she's bound to raise them right!

	EPDs	%Rnk
CE:	10	55
BW:	1.1	55
WW:	74	30
YW:	122	25
MK:	30	15
TM:	67	15
CM:	5	70
SC:	.39	95
DC:	16	10
YG:	.01	90
CW:	36	45
RE:	.38	90
MB:	.47	20
FAT:	.01	85
\$MI:	70	20

# FALL PAIRS



LOT 26



LOT 26A

## 25 KCLM ELLIE'S 06J

COW LIM-FLEX(36/32.9) • DOUBLE POLLED • DOUBLE BLACK  
09/06/2021 • KCLM 06J • LFF2480145

COLBURN PRIMO 5153  
PCOL SISTERS FAV ET  
BC SISTER'S RIDE 080C

BC 89C  
BRUSH CREEK ELLIE  
PAA BLACKBIRD G61

ACT BW: 440 ADJ WW: 440 ADJ YW: 766  
ADJ RIB FAT: 0.1 ADJ REA: 10.25 ADJ \$IMF: 3.645

GE-EPDs

	EPDs	%Rnk
CE:	12	30
BW:	.5	40
WW:	64	55
YW:	98	60
MK:	21	75
TM:	54	65
CM:	5	70
SC:		
DC:	9	85
YG:	-.05	80
CW:	33	40
RE:	.43	80
MB:	.3	40
FAT:	0	75
\$MI:	61	45

CONSIGNED BY: LAWRENCE FAMILY LIMOUSIN, ANTON, TX  
PE'd 11/15/23-2/29/24 to LFL Esquire 7084E ET.

KCLM Ellie's 06J is a real eye-appealing, first-calf heifer that has done a good job with her first calf.

## 26 LFL JIGGLES 1304J ET

COW PERCENTAGE(76/68) • HOMO POLLED (P-2) • HOMO BLACK (T)  
09/11/2021 • BLAW 1304J • NXF2493342

HUNT CREDENTIALS 37C ET  
COLE GENESIS 86G  
COLE MISS XRATED 354A

TMCK ARCHITECT 031A  
LFL ELISE 7021E ET  
DJ XECUTIVE PRIVILEGE

ACT BW: 64 ADJ WW: 686 ADJ YW: 873  
ADJ RIB FAT: 0.26 ADJ REA: 11.55 ADJ \$IMF: 4.59

GE-EPDs

	EPDs	%Rnk
CE:	13	20
BW:	-.3	25
WW:	76	10
YW:	114	15
MK:	32	10
TM:	70	4
CM:	10	4
SC:	.6	50
DC:	14	30
YG:	.06	95
CW:	39	15
RE:	.4	90
MB:	.48	10
FAT:	.03	95
\$MI:	70	10

CONSIGNED BY: LAWRENCE FAMILY LIMOUSIN, ANTON, TX  
AI'd 11/13/23 to Wulfs Joint Venture G579J; PE'd 11/25/23-2/29/24 to LFL Esquire 7084E ET.

LFL Jiggles is a 76% daughter of the popular COLE Genesis bull and her dam is a maternal sister to LFL Dividend. Jiggles has low CE & BW, moderate growth with high CW & MB, including the top 10% for \$MI.

## 25A LFL LEVITICUS 3237 L

BULL LIM-FLEX(43/38.5) • HOMO POLLED (T) • HOMO BLACK (T)  
11/27/2023 • BLAW 3237L • LFM2797964

POSS MAVERICK  
LFL JAGUAR 1044J ET  
LFL DANDY 6095 D

PCOL SISTERS FAV ET  
KCLM ELLIE'S 06J  
BRUSH CREEK ELLIE

ACT BW: 64 ADJ WW: 703 ADJ YW:

	EPDs	%Rnk
CE:	12	30
BW:	1	50
WW:	67	60
YW:	101	70
MK:	24	60
TM:	57	65
CM:	5	70
SC:		
DC:	13	50
YG:	-.06	75
CW:	36	45
RE:	.65	50
MB:	.6	10
FAT:	.02	90
\$MI:	72	10

CONSIGNED BY: LAWRENCE FAMILY LIMOUSIN, ANTON, TX  
LFL Leviticus 3237 L, a double homozygous bull calf.

## 26A LFL LORI 3122 L

COW LIM-FLEX(63/56.4) • HOMO POLLED (P-3) • HOMO BLACK (P-1)  
09/03/2023 • BLAW 3122L • LFF2797873

MAGS CABLE  
MAGS FEDERAL RESERVE ET  
CJSL 4357B ET

COLE GENESIS 86G  
LFL JIGGLES 1304J ET  
LFL ELISE 7021E ET

ACT BW: 69 ADJ WW: 649 ADJ YW:

GE-EPDs

	EPDs	%Rnk
CE:	12	30
BW:	-1.6	10
WW:	63	75
YW:	86	95
MK:	32	5
TM:	63	30
CM:	11	2
SC:	1.05	35
DC:	8	95
YG:	.02	90
CW:	25	80
RE:	.37	90
MB:	.46	20
FAT:	.03	95
\$MI:	65	35

CONSIGNED BY: LAWRENCE FAMILY LIMOUSIN, ANTON, TX  
LFL Lori 3122 L is a double homozygous daughter of the popular MAGS Federal Reserve.

# FALL PAIRS



LOT 27



LOT 28

LOT 28A

## 27 PCOL JESSIE ET

COW LIM-FLEX(43/39.1) • HOMO POLLED (P-1) • DOUBLE BLACK  
09/17/2021 • PCOL 002J • LFF2481318

— SCC TRADITION OF 24  
**SCC SCH 24 KARAT 838**  
— FCF PROVEN QUEEN 419

— DJ XPLOSIVE  
**BC SISTER'S RIDE 080C**  
— ELMW RIDER'S LOVE 80R

ACT BW: 78    ADJ WW:    ADJ YW:   

CONSIGNED BY: PEYTON COLLUM, GUTHRIE, OK:  
BRUCE BROOKS, 580-695-2036

PE'd 11/1/23-3/1/24 to BNTL Flex Machine 352F.

Jessie was the Reserve Champion Limousin Heifer at OYE in 2023, and a bred and owned for Peyton Collum. Another great producing first-calf heifer that is out of Sister's Pride, Peyton's National Junior Heifer Show Reserve Champion Female.

	EPDs	%Rnk
CE:	7	90
BW:	1.6	65
WW:	68	40
YW:	104	45
MK:	28	30
TM:	63	25
CM:	5	70
SC:		
DC:	11	65
YG:	-.13	60
CW:	34	40
RE:	.66	45
MB:	-.06	85
FAT:	-.01	60
\$MI:	54	85

## 28 LFL JELLY DONUT 1306J ET

COW PERCENTAGE(76/68) • HOMO POLLED (P-2) • HOMO BLACK (T)  
09/17/2021 • BLAW 1306J • NXF2493343

— HUNT CREDENTIALS 37C ET  
**COLE GENESIS 86G**  
— COLE MISS XRATED 354A

— TMCK ARCHITECT 031A  
**LFL ELISE 7021E ET**  
— DJ XECUTIVE PRIVILEGE

ACT BW: 70    ADJ WW: 706    ADJ YW: 862  
ADJ RIB FAT: 0.22    ADJ REA: 10.14    ADJ SIMF: 3.99

CONSIGNED BY: LAWRENCE FAMILY LIMOUSIN, ANTON, TX

AI'd 11/13/23 to Wulfs Joint Venture G579J; PE'd 11/25/23-4/25/24 to LFL Esquire 7084E ET.

LFL Jelly Donut is a 76% daughter of COLE Genesis. She is low birthweight with moderate growth and high carcass including the top 3% for MB, 5% for DC, 10% for BW, MK & \$MI and 20% for CW & CM.

	EPDs	%Rnk
CE:	11	35
BW:	-.13	10
WW:	65	40
YW:	101	40
MK:	33	10
TM:	65	15
CM:	8	20
SC:	.6	50
DC:	17	5
YG:	.02	95
CW:	35	20
RE:	.3	95
MB:	.56	3
FAT:	.01	95
\$MI:	70	10

## 27A PCOL LEVI 05L

BULL LIM-FLEX(71/61.6) • HOMO POLLED (P-2) • DOUBLE BLACK  
10/25/2023 • PCOL 05L • LFM2799331

— ROMN FLOYD MUDHENKEY 101F  
**SCHILLING HALAS ET**  
— SCHILLING'S YOKI

— SCC SCH 24 KARAT 838  
**PCOL JESSIE ET**  
— BC SISTER'S RIDE 080C

ACT BW: 74    ADJ WW:    ADJ YW:   

CONSIGNED BY: PEYTON COLLUM, GUTHRIE, OK:  
BRUCE BROOKS, 580-695-2036

A son of Schilling's Halas makes Levi a higher percentage Lim-Flex bull that will make a super herd bull.

	EPDs	%Rnk
CE:	9	70
BW:	.6	40
WW:	62	80
YW:	96	80
MK:	25	50
TM:	56	70
CM:	5	70
SC:		
DC:	13	50
YG:	-.29	20
CW:	24	85
RE:	.82	25
MB:	-.08	95
FAT:	-.04	20
\$MI:	48	95

## 28A LFL LAYTON 3200 L

BULL LIM-FLEX(63/56.1) • HOMO POLLED (P-3) • HOMO BLACK (P-2)  
10/26/2023 • BLAW 3200L • LFM2797924

— POSS MAVERICK  
**LFL JAGUAR 1044J ET**  
— LFL DANDY 6095 D

— COLE GENESIS 86G  
**LFL JELLY DONUT 1306J ET**  
— LFL ELISE 7021E ET

ACT BW: 89    ADJ WW: 784    ADJ YW:   

CONSIGNED BY: LAWRENCE FAMILY LIMOUSIN, ANTON, TX

LFL Layton is an eye-appealing herd sire prospect that ratio'd 111 on WW and ranks in the top 5% for \$MI & 20% for TI.

	EPDs	%Rnk
CE:	7	95
BW:	1	50
WW:	62	80
YW:	100	75
MK:	30	15
TM:	60	50
CM:	4	85
SC:	.62	80
DC:	18	3
YG:	-.13	55
CW:	32	60
RE:	.62	55
MB:	.7	2
FAT:	-.01	55
\$MI:	75	5

# FALL PAIRS



**MAGS EAGLE** • Sire of Lot 29



**LOT 30**

## 29 COW **CHR JANA 172J**

LIM-FLEX(53/47.5) • DOUBLE POLLED • HOMO BLACK (P-3)  
09/23/2021 • SKHS 172J • LFF2481406

—MAGS WINSTON  
**MAGS EAGLE**  
—MAGS WEB OF DECEIT

—JMFA RODEMASTER 294Z  
**CHR FIDDLY DEE 203F**  
—SSTO BALL GIRL 4873B

ACT BW: 76    ADJ WW: 590    ADJ YW: 902  
ADJ RIB FAT: 0.11    ADJ REA: 9.06    ADJ \$IMF: 3.71

CONSIGNED BY: LAWRENCE FAMILY LIMOUSIN, ANTON, TX

PE'd 12/15/23-2/29/24 to LFL Jetson 1300J ET.

CHR Jana is a first-calf heifer and a daughter of the popular MAGS Eagle. She is low birthweight with above average growth and above average CW & MB.

GE-EPDS

	EPDs	%Rnk
CE:	10	55
BW:	1	50
WW:	73	25
YW:	119	20
MK:	22	70
TM	58	45
CM:	5	70
SC:	.82	55
DC:	13	40
YG	.05	95
CW:	36	30
RE:	.27	95
MB:	.32	35
FAT:	.01	85
\$MI:	64	35

## 30 COW **CHR JANA SUE 186J**

LIM-FLEX(50/44.9) • HOMO POLLED (P-3) • HOMO BLACK (P-2)  
09/29/2021 • KQ 186J • LFF2494266

—PVF INSIGHT 0129  
**DHIL COLT 5793C**  
—PBRs TOUCH ME GENTLY 798T

—MAGS ALI  
**CHR FANCY GIRL 003F ET**  
—AUTO BLISS 265Y

ACT BW: 72    ADJ WW: 601    ADJ YW: 821

CONSIGNED BY: COYOTE HILLS RANCH, CHATTANOOGA, OK

AI'd 11/30/23 to LFL Deluxe Edition; PE'd 12/12/23 to sale day to CHR Hard Rocks 151H; Preg checked 3/20/24; 90-100 days safe.

This young cow has already produced a heifer calf worth talking about. She has done a wonderful job raising a really fancy heifer by Dividend.

	EPDs	%Rnk
CE:	7	90
BW:	3.4	95
WW:	82	5
YW:	131	10
MK:	20	80
TM	61	35
CM:	4	85
SC:	1.05	35
DC:	14	30
YG	-.04	80
CW:	50	10
RE:	.5	70
MB:	.33	35
FAT:	-.02	45
\$MI:	67	20

## 29A COW **LFL LUSITA 3220 L**

LIM-FLEX(51/45.8) • HOMO POLLED (T) • HOMO BLACK (T)  
11/10/2023 • BLAW 3220L • LFF2797948

—POSS MAVERICK  
**LFL JAGUAR 1044J ET**  
—LFL DANDY 6095 D

—MAGS EAGLE  
**CHR JANA 172J**  
—CHR FIDDLY DEE 203F

ACT BW: 73    ADJ WW: 587    ADJ YW:

CONSIGNED BY: LAWRENCE FAMILY LIMOUSIN, ANTON, TX

LFL Lusita 3220 L is a double homozygous heifer by LFL Jaguar that ranks in the top 3% for MB and 10% for \$MI.

	EPDs	%Rnk
CE:	8	85
BW:	.3	35
WW:	64	70
YW:	106	60
MK:	24	60
TM	56	70
CM:	3	95
SC:	.74	70
DC:	15	20
YG	-.17	45
CW:	20	90
RE:	.47	80
MB:	.66	3
FAT:	-.03	30
\$MI:	75	10

## 30A COW **CHR LANA SUE 127L**

LIM-FLEX(58/52.5) • DOUBLE POLLED • HOMO BLACK (P-3)  
10/11/2023 • KQ 127L • LFF2798956

—MAGS AVIATOR  
**LFL DIVIDEND 6084D ET**  
—DJ XECUTIVE PRIVILEGE

—DHIL COLT 5793C  
**CHR JANA SUE 186J**  
—CHR FANCY GIRL 003F ET

ACT BW: 76    ADJ WW: 693    ADJ YW:

CONSIGNED BY: COYOTE HILLS RANCH, CHATTANOOGA, OK

This daughter of Dividend will attract attention whether in a show ring or in your pasture. Take a look at her!

	EPDs	%Rnk
CE:	9	70
BW:	2	75
WW:	70	45
YW:	116	35
MK:	25	50
TM	60	50
CM:	6	55
SC:	.47	90
DC:	17	5
YG	0	85
CW:	34	50
RE:	.35	90
MB:	.39	30
FAT:	0	70
\$MI:	66	35

# FALL PAIRS



LOT 31A



LFL ELLIS 7303E ET • Sire of Lot 32

## 31 JMFA JUST A DEAR 190J

COW LIM-FLEX(50/44) • HOMO POLLED (P-3) • HOMO BLACK (P-1)  
10/01/2021 • JMFA 190J • LFF2481431

— PVF INSIGHT 0129  
DHIL COLT 5793C  
— PBRs TOUCH ME GENTLY 798T

— MAGS Y-AXIS  
JMFA SISSY 495B  
— GLEBE'S SISSY

ACT BW: 80    ADJ WW: 546    ADJ YW: 856  
ADJ RIB FAT: 0.2    ADJ REA: 10.85    ADJ SIMF: 4.03

GE-EPDs

	EPDs	%Rnk
CE:	8	85
BW:	2.3	80
WW:	76	15
YW:	121	15
MK:	35	4
TM:	72	4
CM:	6	55
SC:	.8	55
DC:	12	55
YG:	-.14	55
CW:	42	20
RE:	.6	55
MB:	-.16	70
FAT:	-.03	35
\$MI:	60	50

CONSIGNED BY: LAWRENCE FAMILY LIMOUSIN, ANTON, TX

AI'd 11/13/23 to AHCC Easy Rider 5594E; PE'd 11/25/23-2/29/24 to LFL Esquire 7084E ET.

JMFA Just A Dear is a moderate-growth, first-calf heifer that did a good job with her first calf.

## 32 LFL JENAVEVE 1170J ET

COW LIM-FLEX(51/46.7) • HOMO POLLED (T) • HOMO BLACK (T)  
10/06/2021 • BLAW 1170J • LFF2493345

— MAGS CABLE  
LFL ELLIS 7303E ET  
— LFL BLACK VELVET 4099B ET

— BR MIDLAND  
MAGS SILHOUETTE  
— MAGS LADY ACE

ACT BW: 89    ADJ WW: 720    ADJ YW: 922  
ADJ RIB FAT: 0.14    ADJ REA: 11    ADJ SIMF: 5.785

GE-EPDs

	EPDs	%Rnk
CE:	7	90
BW:	3.4	95
WW:	69	35
YW:	113	30
MK:	17	95
TM:	51	80
CM:	5	70
SC:	1.25	15
DC:	7	95
YG:	-.2	40
CW:	49	10
RE:	1.09	5
MB:	.47	15
FAT:	-.01	60
\$MI:	70	15

CONSIGNED BY: LAWRENCE FAMILY LIMOUSIN, ANTON, TX

PE'd 12/15/23-2/29/24 to LFL Judson 1011J.

LFL Jenaveve ultrasounded an Adj. 5.78 IMF with only 0.12 Adj. Body Fat.

## 31A LFL LENNON 3154 L

BULL LIM-FLEX(65/57.7) • DOUBLE POLLED • HET BLACK (T)  
09/15/2023 • BLAW 3154L • LFM2797888

— COLE CADILLAC 05C  
COLE FORTUNE 12F  
— COLE MISS AUSTIN 3157A

— DHIL COLT 5793C  
JMFA JUST A DEAR 190J  
— JMFA SISSY 495B

ACT BW: 79    ADJ WW: 822    ADJ YW:

	EPDs	%Rnk
CE:	13	20
BW:	-.13	10
WW:	66	65
YW:	104	65
MK:	32	5
TM:	64	25
CM:	10	5
SC:	.2	95
DC:	6	95
YG:	-.1	60
CW:	31	65
RE:	.69	45
MB:	.02	95
FAT:	.01	85
\$MI:	52	95

CONSIGNED BY: LAWRENCE FAMILY LIMOUSIN, ANTON, TX

LFL Lennon 3154 L is a low birthweight son of the popular COLE Fortune. Lennon had an Adj. 822 lb. WW ratioing 115.

## 32A LFL LINDSEY 3199 L

BULL LIM-FLEX(58/52.4) • HOMO POLLED (P-1) • HOMO BLACK (P-1)  
10/24/2023 • BLAW 3199L • LFM2797923

— LFL DELUXE EDITION 6029D ET  
LFL JACKPOT 1032J ET  
— LFL ELEANOR 7103E ET

— LFL ELLIS 7303E ET  
LFL JENAVEVE 1170J ET  
— MAGS SILHOUETTE

ACT BW: 91    ADJ WW: 619    ADJ YW:

GE-EPDs

	EPDs	%Rnk
CE:	7	95
BW:	5.4	95
WW:	81	15
YW:	126	20
MK:	18	95
TM:	59	55
CM:	3	95
SC:	.82	60
DC:	12	65
YG:	.03	90
CW:	47	15
RE:	.62	55
MB:	.37	30
FAT:	.03	95
\$MI:	68	25

CONSIGNED BY: LAWRENCE FAMILY LIMOUSIN, ANTON, TX

A double homozygous bull.

# FALL PAIRS



LFL DELUXE EDITION 6029D ET • Paternal grandsire of Lot 33A



LOT 34

**33**

COW

## LFL JOELLA 1171J

LIM-FLEX(58/51.7) • HOMO POLLED (T) • HOMO BLACK (T)  
10/07/2021 • BLAW 1171J • LFF2493362

— MAGS CABLE  
LFL ELLIS 7303E ET  
— LFL BLACK VELVET 4099B ET

— LH XPRESS FREIGHT 136X  
DHIL SCOTCH CAP 4105B  
— EXLR SCOTCH CAP 1005N

ACT BW: 91    ADJ WW: 653    ADJ YW: 964  
ADJ RIB FAT: 0.1    ADJ REA: 12.7    ADJ \$IMF: 4.55

CONSIGNED BY: LAWRENCE FAMILY LIMOUSIN, ANTON, TX

AI'd 12/5/23 to Ratliff Jump Start 340J ET; PE'd 12/15/23-2/29/24 to LFL Judson 1011J. PE'd 3/1/24-4/29/24 to LFL Esquire 7084E ET. LFL Joella ultrasounded an Adj. 12.70 REA, ratioing 125.

GE-EPDS

	EPDs	%Rnk
CE:	3	95
BW:	4.8	95
WW:	78	10
YW:	120	20
MK:	24	55
TM:	63	25
CM:	2	95
SC:	.9	45
DC:	10	75
YG:	-.03	80
CW:	43	15
RE:	.65	45
MB:	.09	80
FAT:	.02	95
\$MI:	57	65

**34**

COW

## PCOL JACKIE ET

LIM-FLEX(43/39.1) • HOMO POLLED (P-1) • DOUBLE BLACK  
10/20/2021 • PCOL 003J • LFF2481319

— SCC TRADITION OF 24  
SCC SCH 24 KARAT 838  
— FCF PROVEN QUEEN 419

— DJ XPLOSIVE  
BC SISTER'S RIDE 080C  
— ELMW RIDER'S LOVE 80R

ACT BW: 74    ADJ WW:    ADJ YW:   

CONSIGNED BY: PEYTON COLLUM, GUTHRIE, OK:  
BRUCE BROOKS, 580-695-2036

PE'd 10/1/23-12/1/23 to BNTL Flex Machine 352 ET. A great producing first-calf female out of Sister's Pride, Peyton's past National Junior Heifer Show Reserve Champion heifer.

	EPDs	%Rnk
CE:	7	90
BW:	1.6	65
WW:	68	40
YW:	104	45
MK:	28	30
TM:	63	25
CM:	5	70
SC:		
DC:	11	65
YG:	-.13	60
CW:	34	40
RE:	.66	45
MB:	.06	85
FAT:	-.01	60
\$MI:	54	85

**33A**

BULL

## LFL LIVINGSTON 3165 L

LIM-FLEX(61/54.9) • HOMO POLLED (P-1) • HOMO BLACK (P-1)  
09/29/2023 • BLAW 3165L • LFM2797897

— LFL DELUXE EDITION 6029D ET  
LFL JACKPOT 1032J ET  
— LFL ELEANOR 7103E ET

— LFL ELLIS 7303E ET  
LFL JOELLA 1171J  
— DHIL SCOTCH CAP 4105B

ACT BW: 77    ADJ WW: 736    ADJ YW:   

CONSIGNED BY: LAWRENCE FAMILY LIMOUSIN, ANTON, TX

A double homozygous bull.

GE-EPDS

	EPDs	%Rnk
CE:	6	95
BW:	3.2	95
WW:	76	25
YW:	116	35
MK:	22	80
TM:	60	50
CM:	2	95
SC:	.65	80
DC:	14	35
YG:	.04	95
CW:	41	30
RE:	.54	70
MB:	.2	70
FAT:	.03	95
\$MI:	60	65

**34A**

BULL

## PCOL LEATHER 002L

LIM-FLEX(54/48.6) • DOUBLE POLLED • DOUBLE BLACK  
09/05/2023 • PCOL 002L • LFM2799332

— LFL DELUXE EDITION 6029D ET  
LFL GAVIN 9137 G  
— LFL ELEANOR 7103E ET

— SCC SCH 24 KARAT 838  
PCOL JACKIE ET  
— BC SISTER'S RIDE 080C

ACT BW: 72    ADJ WW:    ADJ YW:   

CONSIGNED BY: PEYTON COLLUM, GUTHRIE, OK:  
BRUCE BROOKS, 580-695-2036

Leather has champions on both the top and bottom of his pedigree, take a good hard look at him.

	EPDs	%Rnk
CE:	8	85
BW:	2	75
WW:	76	25
YW:	118	30
MK:	24	60
TM:	62	35
CM:	4	85
SC:		
DC:	12	65
YG:	-.03	80
CW:	34	50
RE:	.45	80
MB:	.26	55
FAT:	.01	85
\$MI:	63	50

# FALL PAIRS

**35**

## LFL JO 1186 J

COW

LIM-FLEX(56/51.2) • HOMO POLLED (T) • HOMO BLACK (T)  
10/24/2021 • BLAW 1186J • LFF2480753

— MAGS CABLE  
LFL ESQUIRE 7084E ET  
— AUTO BLISS 265Y

— MAGS EAGLE  
CHR DRAMA QUEEN 173D  
— CHR YUMMY 180Y

ACT BW: 81    ADJ WW: 629    ADJ YW: 896  
ADJ RIB FAT: 0.21    ADJ REA: 9.58    ADJ \$IMF: 5.225

CONSIGNED BY: LAWRENCE FAMILY LIMOUSIN, ANTON, TX  
PE'd 1/10/24-2/29/24 to LFL Judson 1011J; PE'd 3/1/24-4/29/24 to LFL Esquire 7084E ET.

LFL Jo is a super first-calf heifer with an extra special set of EPDs stacked with growth. She ranks really high in CW & MB and ranks in the top 10% for \$MI and 20% for TI.

GE-EPDs

	EPDs	%Rnk
CE:	9	70
BW:	3.5	95
WW:	76	15
YW:	125	15
MK:	20	80
TM:	58	45
CM:	5	70
SC:	.78	65
DC:	15	20
YG	-.04	80
CW:	44	15
RE:	.58	55
MB:	.49	15
FAT:	0	75
\$MI:	71	10

**35A**

## LFL LEYLANI 3251 L

COW

LIM-FLEX(60/54.6) • HOMO POLLED (P-1) • HOMO BLACK (P-1)  
12/23/2023 • BLAW 3251L • LFF2797974

— LFL DELUXE EDITION 6029D ET  
LFL JACKPOT 1032J ET  
— LFL ELEANOR 7103E ET

— LFL ESQUIRE 7084E ET  
LFL JO 1186 J  
— CHR DRAMA QUEEN 173D

ACT BW: 68    ADJ WW: 678    ADJ YW:

CONSIGNED BY: LAWRENCE FAMILY LIMOUSIN, ANTON, TX  
A double homozygous heifer.

	EPDs	%Rnk
CE:	8	85
BW:	3.1	95
WW:	76	25
YW:	120	30
MK:	20	90
TM:	58	60
CM:	3	95
SC:	.59	85
DC:	15	20
YG	.05	95
CW:	40	30
RE:	.42	85
MB:	.43	25
FAT:	.02	90
\$MI:	68	25

**36**

## LFL JAPHETH 1196 J

COW

PERCENTAGE(28/25.9) • POLLED • BLACK  
10/30/2021 • BLAW 1196J • NXF2493836

— MAGS CABLE  
LFL ESQUIRE 7084E ET  
— AUTO BLISS 265Y

COMMERCIAL COW W1

ACT BW: 72    ADJ WW: 985    ADJ YW: 1027  
ADJ RIB FAT: 0.15    ADJ REA: 9.73    ADJ \$IMF: 4.345

CONSIGNED BY: LAWRENCE FAMILY LIMOUSIN, ANTON, TX  
PE'd 12/15/23-2/29/24 to LFL Judson 1011J.

LFL Japeth is a NXF first-calf heifer that has a low birthweight with growth and carcass; including ranks in the top 1% for WW, YW, YG & FAT; 2% for TM & \$MI; 3% for TI & RE.

GE-EPDs

	EPDs	%Rnk
CE:	13	20
BW:	.7	40
WW:	89	1
YW:	143	1
MK:	24	50
TM:	68	10
CM:	9	10
SC:		10
DC:	16	95
YG	.07	1
CW:	65	85
RE:	.48	3
MB:	.55	90
FAT:	0	1
\$MI:	77	

**36A**

## LFL LOMBARDI 3194 L

BULL

LIM-FLEX(39/35) • HOMO POLLED (T) • HOMO BLACK (T)  
10/22/2023 • BLAW 3194L • LFM2797919

— POSS MAVERICK  
LFL JAGUAR 1044J ET  
— LFL DANDY 6095 D

— LFL ESQUIRE 7084E ET  
LFL JAPHETH 1196 J  
— COMMERCIAL COW W1

ACT BW: 78    ADJ WW: 703    ADJ YW:

CONSIGNED BY: LAWRENCE FAMILY LIMOUSIN, ANTON, TX  
A double homozygous bull calf.

GE-EPDs

	EPDs	%Rnk
CE:	8	85
BW:	.9	50
WW:	76	25
YW:	134	10
MK:	25	50
TM:	63	30
CM:	4	85
SC:		
DC:	12	65
YG	.04	95
CW:	49	10
RE:	.55	65
MB:	.79	1
FAT:	.02	90
\$MI:	82	1

**37**

## LFL JUANA 1208 J

COW

LIM-FLEX(42/38) • HOMO POLLED (P-1) • HOMO BLACK (P-1)  
11/04/2021 • BLAW 1208J • LFF2480757

— MAGS AVIATOR  
LFL EDDIE 7019 E  
— LFL CANDY 5040C ET

— CHR ASA 017A  
LFL ELEMENTARY 7404E  
— COMMERCIAL COW 198

ACT BW: 73    ADJ WW: 628    ADJ YW: 884  
ADJ RIB FAT: 0.21    ADJ REA: 10.05    ADJ \$IMF: 4.3

CONSIGNED BY: LAWRENCE FAMILY LIMOUSIN, ANTON, TX  
PE'd 12/15/23-2/29/24 to LFL Krypto 2048K ET; PE'd 4/1/24-4/25/24 to LFL Esquire 7084E ET.

LFL Juana is a double homozygous, first-calf heifer.

GE-EPDs

	EPDs	%Rnk
CE:	11	40
BW:	-.3	25
WW:	64	55
YW:	91	75
MK:	20	80
TM:	52	75
CM:	6	55
SC:		
DC:	15	20
YG	.06	95
CW:	20	85
RE:	.15	95
MB:	.35	30
FAT:	.02	95
\$MI:	61	45

**37A**

## LFL LEAP YEAR 3205 L

BULL

LIM-FLEX(46/41.1) • HOMO POLLED (P-3) • HOMO BLACK (P-2)  
10/28/2023 • BLAW 3205L • LFM2797928

— POSS MAVERICK  
LFL JAGUAR 1044J ET  
— LFL DANDY 6095 D

— LFL EDDIE 7019 E  
LFL JUANA 1208 J  
— LFL ELEMENTARY 7404E

ACT BW: 64    ADJ WW: 547    ADJ YW:

CONSIGNED BY: LAWRENCE FAMILY LIMOUSIN, ANTON, TX  
A double homozygous bull calf.

GE-EPDs

	EPDs	%Rnk
CE:	11	40
BW:	-.3	20
WW:	56	95
YW:	86	95
MK:	23	70
TM:	51	90
CM:	5	70
SC:		
DC:	17	5
YG	0	85
CW:	21	90
RE:	.32	95
MB:	.69	2
FAT:	.02	90
\$MI:	72	15

# FALL PAIRS

**38**

## LFL JACQUELINE 1221 J

COW

LIM-FLEX(45/40.8) • HET POLLED (T) • HOMO BLACK (T)  
11/13/2021 • BLAW 1221J • LFF2480754

— MAGS CABLE  
**LFL ELLIS 7303E ET**  
— LFL BLACK VELVET 4099B ET

— EXAR FREIGHTER 1452B  
**MAGS DUST DEVIL**  
— MAGS ALANNA

ACT BW: 75    ADJ WW: 846    ADJ YW: 1033  
ADJ RIB FAT: 0.18    ADJ REA: 11.67    ADJ SIMF: 4.805

GE-EPDs

	EPDs	%Rnk
CE:	7	90
BW:	3	90
WW:	77	15
YW:	116	25
MK:	29	20
TM:	68	10
CM:	6	55
SC:	1.21	15
DC:	12	55
YG	-.17	50
CW:	32	45
RE:	.74	35
MB:	.12	75
FAT:	-.01	60
\$MI:	59	55

CONSIGNED BY: LAWRENCE FAMILY LIMOUSIN, ANTON, TX

AI'd 12/6/23 to Ratliff Jump Start 340J ET; PE'd 12/15/23-2/29/24 to LFL Esquire 7084E ET.

LFL Jaqueline ranks in the top 15% for WW & SC; 20% for MK; 25% for YW and 35% for RE.

**38A**

## LFL LAYNE 3155 L

BULL

LIM-FLEX(55/49.7) • HOMO POLLED (T) • HOMO BLACK (P-3)  
09/16/2023 • BLAW 3155L • LFM2797892

— RLBH AIR FORCE ONE  
**LFL DELUXE EDITION 6029D ET**  
— LFL ZHA ZHA 2075Z

— LFL ELLIS 7303E ET  
**LFL JACQUELINE 1221 J**  
— MAGS DUST DEVIL

ACT BW: 87    ADJ WW: 722    ADJ YW:

GE-EPDs

	EPDs	%Rnk
CE:	6	95
BW:	2.9	90
WW:	75	30
YW:	115	40
MK:	24	60
TM:	62	35
CM:	2	95
SC:	1.01	35
DC:	13	50
YG	.06	95
CW:	23	85
RE:	.14	95
MB:	.12	85
FAT:	.01	85
\$MI:	57	80

CONSIGNED BY: LAWRENCE FAMILY LIMOUSIN, ANTON, TX

LFL Layne is a double homozygous bull.

**39**

## LFL JOY 1239 J

COW

PERCENTAGE(78/70.6) • HOMO POLLED (P-3) • HOMO BLACK (P-2)  
11/27/2021 • BLAW 1239J • NXF2480779

— MAGS CABLE  
**LFL ESQUIRE 7084E ET**  
— AUTO BLISS 265Y

— GPFF BLAQUE RULON  
**LFL DYNASTY 6101D ET**  
— CHR KOKO

ACT BW: 63    ADJ WW: 608    ADJ YW: 823  
ADJ RIB FAT: 0.19    ADJ REA: 10.23    ADJ SIMF: 4.595

GE-EPDs

	EPDs	%Rnk
CE:	15	10
BW:	-.1	25
WW:	58	65
YW:	86	65
MK:	19	85
TM:	47	85
CM:	8	20
SC:	.3	80
DC:	8	85
YG	-.28	60
CW:	16	70
RE:	.64	70
MB:	.24	30
FAT:	-.04	60
\$MI:	58	35

CONSIGNED BY: LAWRENCE FAMILY LIMOUSIN, ANTON, TX

PE'd 1/15/24-4/25/24 to LFL Jetson 1300J ET.

LFL Joy is a 78% LFL Dividend daughter of LFL Dynasty, a flushmate to KRVN Pacesetter. Joy's full brother was a popular lot in the March 2024 CHR Bull Sale.

**39A**

## LFL LORELEI 3250 L

COW

LIM-FLEX(64/57.4) • DOUBLE POLLED • HOMO BLACK (P-3)  
12/23/2023 • BLAW 3250L • LFF2797973

— POSS MAVERICK  
**LFL JAGUAR 1044J ET**  
— LFL DANDY 6095 D

— LFL ESQUIRE 7084E ET  
**LFL JOY 1239 J**  
— LFL DYNASTY 6101D ET

ACT BW: 72    ADJ WW: 655    ADJ YW:

	EPDs	%Rnk
CE:	12	30
BW:	.6	40
WW:	60	85
YW:	95	80
MK:	23	70
TM:	52	90
CM:	5	70
SC:	.47	90
DC:	12	65
YG	-.23	30
CW:	22	90
RE:	.68	45
MB:	.57	10
FAT:	-.02	40
\$MI:	71	15

CONSIGNED BY: LAWRENCE FAMILY LIMOUSIN, ANTON, TX

LFL Lorelei is a double polled heifer calf.

All heifer calves in this sale are eligible to compete in the Lone Star Shoot-Out, which will be held in conjunction with the 2025 Fort Worth Stock Show Junior Limousin Heifer Show. The Shoot-Out is open to any

Texas 4-H & FFA member who purchases a nominated heifer and tells the clerk sale day that the heifer is to be entered in the Lone Star Shoot-Out.



Management and administration of the Lone Star Shoot-Out program:

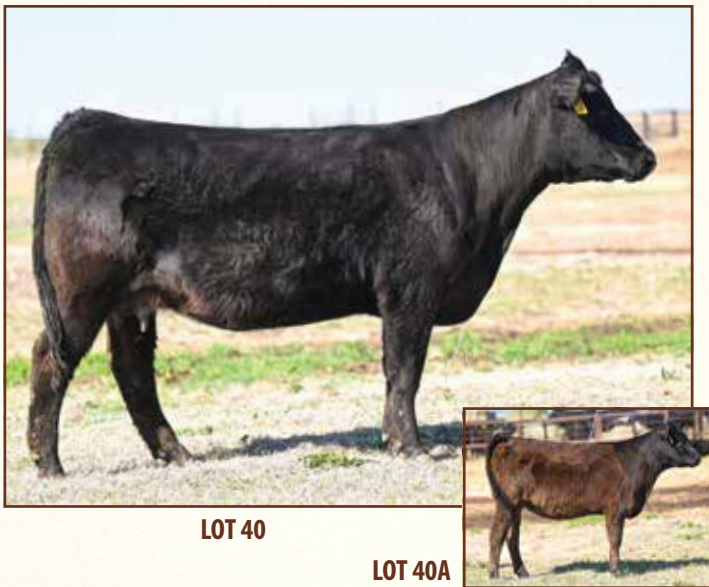
**TEXAS LIMOUSIN ASSOCIATION**

Leighton Chachere, Executive Secretary, 806-500-8785, texaslimousin@gmail.com





# FALL PAIRS



LOT 40

LOT 40A



LOT 41

LOT 41A

**40**

COW

## LFL JAYLA 1242 J

LIM-FLEX(58/52.9) • HOMO POLLED (T) • HOMO BLACK (T)  
12/01/2021 • BLAW 1242J • LFF2480769

—MAGS CABLE  
LFL ELLIS 7303E ET  
—LFL BLACK VELVET 4099B ET

—MAGS ANCHOR  
LH DANDI 012D ET  
—AUTO BLISS 265Y

ACT BW: 71    ADJ WW: 574    ADJ YW: 834  
ADJ RIB FAT: 0.17    ADJ REA: 9.08    ADJ \$IMF: 5.085

GE-EPDs

	EPDs	%Rnk
CE:	11	40
BW:	1	50
WW:	73	25
YW:	112	30
MK:	16	95
TM:	53	70
CM:	6	55
SC:	.88	55
DC:	10	75
YG	-.06	75
CW:	49	10
RE:	.57	60
MB:	.43	20
FAT:	-.02	45
\$MI:	68	15

CONSIGNED BY: LAWRENCE FAMILY LIMOUSIN, ANTON, TX

AI'd 11/12/23 to Wulfs Keynote 4815K; PE'd 11/25/23-2/29/24 to LFL Judson 1011J.

LFL Jayla is a first-calf heifer that is moderately framed, easy fleshing and has above-average growth and carcass traits—top 10% rank for CW and 15% for \$MI.

**41**

COW

## LFL JULIANA 1203 J

LIM-FLEX(57/51.8) • HOMO POLLED (T) • HOMO BLACK (T)  
12/02/2021 • TKJP 1203J • LFF2480767

—CJSL CREED 5042C  
LFL GARLAND 9021 G  
—LFL ELIANA 7028E ET

—LFL DELUXE EDITION 6029D ET  
LFL GLITTER BOMB 9095G ET  
—MAGS DE LOREAN ET

ACT BW: 72    ADJ WW: 707    ADJ YW: 882  
ADJ RIB FAT: 0.14    ADJ REA: 9.51    ADJ \$IMF: 5.15

GE-EPDs

	EPDs	%Rnk
CE:	12	30
BW:	1.8	70
WW:	73	25
YW:	119	20
MK:	34	5
TM:	70	10
CM:	6	55
SC:	.56	80
DC:	10	75
YG	.03	90
CW:	26	65
RE:	.27	95
MB:	.59	5
FAT:	.02	95
\$MI:	73	5

CONSIGNED BY: COLT PARKINSON, LEVELLAND, TX

AI'd 11/13/23 to Wulfs Keynote 4815K; PE'd 11/25/23-2/29/24 to LFL Jetson 1300J ET.

LFL Juliana is a granddaughter of Tucker's show heifer MAGS De Lorean 1402 B. Juliana is a moderate-framed, easy fleshing, first-calf heifer with a really balanced set of EPDs. She had an Adj. 5.15 IMF.

**40A**

COW

## LFL LONELY GIRL 3193 L

LIM-FLEX(54/48.5) • HOMO POLLED (P-3) • HOMO BLACK (P-2)  
10/19/2023 • BLAW 3193L • LFF2797917

—POSS MAVERICK  
LFL JAGUAR 1044J ET  
—LFL DANDY 6095 D

—LFL ELLIS 7303E ET  
LFL JAYLA 1242 J  
—LH DANDI 012D ET

ACT BW: 72    ADJ WW: 604    ADJ YW:

GE-EPDs

	EPDs	%Rnk
CE:	10	55
BW:	1.8	70
WW:	72	40
YW:	117	35
MK:	21	85
TM:	57	65
CM:	4	85
SC:	.76	70
DC:	16	10
YG	-.08	70
CW:	44	20
RE:	.61	60
MB:	.6	10
FAT:	-.01	55
\$MI:	75	10

CONSIGNED BY: LAWRENCE FAMILY LIMOUSIN, ANTON, TX

Don't miss this eye-appealing heifer calf that is high growth and high carcass. She ranks in the top 10% for \$MI and 5% for TI.

**41A**

BULL

## LFL LATHAN 3120 L

LIM-FLEX(62/56) • HOMO POLLED (P-1) • HOMO BLACK (P-3)  
09/02/2023 • TKJP 3120L • LFM2797871

—MAGS AVIATOR  
LFL DIVIDEND 6084D ET  
—DJ XECUTIVE PRIVILEGE

—LFL GARLAND 9021 G  
LFL JULIANA 1203 J  
—LFL GLITTER BOMB 9095G ET

ACT BW: 68    ADJ WW: 825    ADJ YW:

GE-EPDs

	EPDs	%Rnk
CE:	14	10
BW:	-.8	15
WW:	65	65
YW:	103	65
MK:	32	5
TM:	64	25
CM:	8	20
SC:	.23	95
DC:	18	3
YG	.13	95
CW:	31	65
RE:	.12	95
MB:	.68	3
FAT:	.03	95
\$MI:	73	10

CONSIGNED BY: TUCKER PARKINSON, LEVELLAND, TX

LFL Lathan 3120 L ratio'd 117 on WW.

# SPRING BREDS/PAIRS



LOT 42



LOT 43

**42**

COW

**SSTO 0810H ET**

LIM-FLEX(50/44.9) • HOMO POLLED (T) • HOMO BLACK (T)  
02/02/2020 • SSTO 0810H • LFF2275923

— GAMBLES HOT ROD  
SILVEIRAS STYLE 9303  
— SILVEIRAS ELBA 2520

— DHVO DEUCE 132R  
SBLX XTRA SPECIAL  
— MAGS MANUELA

ACT BW: 70    ADJ WW:    ADJ YW:   

CONSIGNED BY: PEYTON COLLUM, GUTHRIE, OK:  
BRUCE BROOKS, 580-695-2036

PE'd 6/1/23-9/1/23 to LFL Gavin 9137G.

This cow is the dam of Leonardo, a bull who is selling in this sale as Lot 74. He was Reserve Champion bull at the 2024 FWSS Open Limousin Show.

	EPDs	%Rnk	PE
CE:	8	85	9
BW:	2.4	85	2.4
WW:	63	60	74
YW:	97	65	115
MK:	20	80	20
TM:	51	80	57
CM:	5	70	4
SC:	.95	45	0.63
DC:	9	85	11
YG:	-.13	60	-0.03
CW:	34	40	34
RE:	.6	55	0.42
MB:	.21	60	0.33
FAT:	-.01	60	0.01
\$MI:	58	65	64

**43**

COW

**LFL FAE MAE 8087 F**

PERCENTAGE(81/73.3) • HOMO POLLED (T) • HOMO BLACK (T)  
07/08/2018 • BLAW 8087F • NXF2152164

— EBFL YPSILANTI 420Y  
LFL BOOMERANG 4050B  
— DJ XECUTIVE PRIVILEGE

— KRVN PACESETTER 053P  
LFL 7024 T  
— LFL 5045 R

ACT BW: 73    ADJ WW: 758    ADJ YW: 1159  
ADJ RIB FAT: 0.49    ADJ REA: 15.47    ADJ \$IMF: 5.14

CONSIGNED BY: LAWRENCE FAMILY LIMOUSIN, ANTON, TX  
Should calve by sale day to LFL Jetson.

LFL Fae Mae 8087 F is a 81% female that is moderate framed and easy fleshing. Fae Mae had an Adj. 15.47 REA and a 5.14 Adj. IMF. Be sure to check out Fae Mae's daughter LFL Kenzie 2068 K selling as Lot 63.

GE-EPDs

	EPDs	%Rnk	PE
CE:	12	25	12
BW:	.4	35	0.8
WW:	50	85	69
YW:	66	95	105
MK:	13	95	16
TM:	38	95	51
CM:	7	35	6
SC:	.8	30	0.35
DC:	10	75	13
YG:	-.26	65	-0.09
CW:	-.3	95	12
RE:	.34	95	0.31
MB:	.06	55	0.61
FAT:	-.04	60	0.00
\$MI:	49	75	73

# SPRING BREDS/PAIRS



LOT 44



LOT 45

## 44 LFL FOOL'S GOLD 8115 F

COW

LIM-FLEX(68/61.5) • HET POLLED (T) • HOMO BLACK (T)  
09/21/2018 • TKJP 8115F • LFF2157883

—RLBH AIR FORCE ONE  
LFL DELUXE EDITION 6029D ET  
—LFL ZHA ZHA 2075Z

—MAGS ZODIAC  
LFL DECORATOR 6117 D  
—LFL ZELMA 2106Z

ACT BW: 70    ADJ WW: 722    ADJ YW:     
ADJ RIB FAT: 0.41    ADJ REA: 10.67    ADJ SIMF: 5.57

CONSIGNEE BY: COLT PARKINSON, LEVELLAND, TX

Should calve by sale day to LFL Dividend 6084D ET.

LFL Fool's Gold 8115 F was the third best Lim-Flex heifer at the 2020 NJLSC Party Of The Century in West Monroe, Louisiana for Tucker. Her 2022 heifer calf, LFL Kamila 2062 K, topped our 2023 fall online sale going to Wilder Family Limousin. Her 2023 heifer calf, LFL LaDonna, is selling as Lot 67, an open show heifer.

	EPDs	%Rnk	PE
CE:	8	85	10
BW:	4.6	95	2.2
WW:	86	2	76
YW:	145	1	129
MK:	13	95	22
TM:	56	55	60
CM:	1	95	5
SC:	.55	80	0.23
DC:	15	20	17
YG:	.06	95	0.05
CW:	47	10	36
RE:	.41	80	0.34
MB:	.25	50	0.37
FAT:	.01	85	0.02
\$MI:	65	25	66

GE-EPDs

## 45 LFL FLO 8025F ET

COW

LIM-FLEX(53/47) • HOMO POLLED (T) • HOMO BLACK (P-2)  
03/22/2018 • BLAW 8025F • LFF2149869

—TC ABERDEEN 759  
MAGS Y-AXIS  
—MAGS UAHUKA

—MAGS ZODIAC  
MAGS CANDREA  
—MAGS ANDREA

ACT BW: 78    ADJ WW: 777    ADJ YW: 790  
ADJ RIB FAT: 0.3    ADJ REA: 13.49    ADJ SIMF: 5.22

CONSIGNEE BY: LAWRENCE FAMILY LIMOUSIN, ANTON, TX

Lot 45A: LFL Minna 4075 M, a 4/13/24, homo black, homo polled, 55% Lim-Flex heifer sired by LFL Esquire 7084E ET. BW: 81 lbs.

LFL Flo 8025F is one of three flushmate sisters selling. Their dam, MAGS Candrea 492 C, is now working in Gulotta's Live Oak Limousin Ranch. These cows are all doing a great job. Flo's bull calf last year ratio'd 115 on WW and was an alternate to our Division Champion Denver Pen.

	EPDs	%Rnk	PE
CE:	10	55	11
BW:	1.2	55	1.4
WW:	77	15	79
YW:	130	10	134
MK:	25	45	22
TM:	64	20	62
CM:	5	70	7
SC:	1	35	0.80
DC:	16	10	17
YG:	-.01	85	-0.01
CW:	35	35	39
RE:	.34	90	0.41
MB:	.19	65	0.40
FAT:	0	75	0.00
\$MI:	61	45	69

GE-EPDs

# SPRING BREDS/PAIRS



LOT 46



LOT 47

## 46 LFL FERN 8026F ET

COW

LIM-FLEX(53/47) • HOMO POLLED (P-3) • HOMO BLACK (P-2)  
03/23/2018 • BLAW 8026F • LFF2149879

TC ABERDEEN 759  
MAGS Y-AXIS  
MAGS UAHUKA

MAGS ZODIAC  
MAGS CANDREA  
MAGS ANDREA

ACT BW: 75    ADJ WW: 614    ADJ YW: 858  
ADJ RIB FAT: 0.32    ADJ REA: 13.44    ADJ \$IMF: 6.715

CONSIGNEE BY: LAWRENCE FAMILY LIMOUSIN, ANTON, TX  
Lot 46A: LFL Milly 7042 M, a 4/10/24, homo black, double polled, 55% Lim-Flex heifer sired by LFL Esquire 7084E ET. BW: 70 lbs. LFL Fern 8026F scanned a 13.44 Adj. REA and an Adj. 6.715 IMF with only 0.32 Adj. Fat to ratio 91 on FT. Big REA, big MB and low fat is what Lim-Flex cows can do.

	EPDs	%Rnk	PE
CE:	15	5	14
BW:	-2.4	4	-0.5
WW:	56	85	69
YW:	92	75	115
MK:	30	20	25
TM:	58	45	59
CM:	8	20	8
SC:	1	35	0.80
DC:	17	5	17
YG:	-0.05	80	-0.03
CW:	20	85	31
RE:	.32	90	0.40
MB:	.57	10	0.59
FAT:	0	75	0.00
\$MI:	68	15	73

GE-EPDs

## 47 LFL FRAN 8027F ET

COW

LIM-FLEX(53/47) • HOMO POLLED (T) • HOMO BLACK (P-2)  
03/24/2018 • BLAW 8027F • LFF2149870

TC ABERDEEN 759  
MAGS Y-AXIS  
MAGS UAHUKA

MAGS ZODIAC  
MAGS CANDREA  
MAGS ANDREA

ACT BW: 73    ADJ WW: 767    ADJ YW: 1108  
ADJ RIB FAT: 0.41    ADJ REA: 13.71    ADJ \$IMF: 5.51

CONSIGNEE BY: LAWRENCE FAMILY LIMOUSIN, ANTON, TX  
Should calve by sale day to LFL Esquire.  
LFL Fran 8027F has weaned four calves that ratio'd 107 and averaged 761 lbs. and had YW ratios of 106 at 1220 lbs. Fran's calf from last year, LFL Lowrie 3090 L, was our lead bull in our 2024 Denver Division Champion Spring Bull Pen.

	EPDs	%Rnk	PE
CE:	6	95	9
BW:	.9	50	1.2
WW:	64	55	73
YW:	107	40	123
MK:	30	20	25
TM:	62	30	61
CM:	3	95	6
SC:	1	35	0.80
DC:	14	30	16
YG:	-0.04	80	-0.03
CW:	38	25	40
RE:	.44	80	0.46
MB:	.16	70	0.38
FAT:	-0.01	60	-0.01
\$MI:	56	75	66

GE-EPDs

# SPRING BREDS/PAIRS



LOT 48



LOT 49

## 48 SSTO FIRST FLING 8868F

COW

LIM-FLEX(68/61.7) • HET POLLED (T) • HOMO BLACK (T)  
04/15/2018 • SSTO 8868F • LFF2146269

— MAGS WINSTON  
MAGS ZODIAC  
— MAGS XANTHOUS

— MAGS UNITE TOGETHER  
SBLX SULL CARRIED AWAY ET  
— MAGS MANUELA

GE-EPDs

	EPDs	%Rnk	PE
CE:	8	85	10
BW:	4	95	2.6
WW:	78	10	83
YW:	136	4	140
MK:	22	70	21
TM:	61	35	62
CM:	4	85	5
SC:	.4	85	0.15
DC:	15	20	16
YG:	-.04	80	0.03
CW:	37	30	32
RE:	.53	65	0.41
MB:	.43	20	0.79
FAT:	.01	85	0.03
\$MI:	70	15	84

ACT BW: 73    ADJ WW: 662    ADJ YW:     
ADJ RIB FAT: 0.37    ADJ REA: 15.61    ADJ \$IMF: 4.69

CONSIGNED BY: LAWRENCE FAMILY LIMOUSIN, ANTON, TX

Lot 48A: LFL Moe 4079 M, a 4/14/24, homo black, double polled, 64% Lim-Flex bull sired by LFL Jetson 1300J ET. BW: 82 lbs. SSTO First Fling is a granddaughter of the popular MAGS Manuela cow and is sired by MAGS Zodiac. She had an Adj. 15.61 REA and a 4.69 IMF. First Fling has weaned four calves at 721 lbs. ratioing 107 with a YW of 1416 lbs. ratioing 110. First Fling's 2023 bull calf, LFL Lawson, was also a member of our 2024 Denver Calf Division Pen Champion.

## 49 LFL FARRAH 8064F ET

COW

LIM-FLEX(53/48) • HOMO POLLED (P-1) • HOMO BLACK (P-2)  
05/09/2018 • BLAW 8064F • LFF2149900

— MAGS APPLESEED  
MAGS CABLE  
— MAGS ZEQUIN

— COLE WINDFALL 144W  
LFL BLACK VELVET 4099B ET  
— AUTO BLISS 265Y

GE-EPDs

	EPDs	%Rnk	PE
CE:	10	55	9
BW:	2.2	80	2.5
WW:	84	3	80
YW:	135	4	125
MK:	30	20	25
TM:	72	4	65
CM:	7	35	5
SC:	1	35	0.70
DC:	14	30	14
YG:	-.04	80	0.06
CW:	54	3	46
RE:	.71	35	0.49
MB:	.5	10	0.43
FAT:	0	75	0.02
\$MI:	74	5	69

ACT BW: 76    ADJ WW: 619    ADJ YW: 1142  
ADJ RIB FAT: 0.51    ADJ REA: 12.65    ADJ \$IMF: 5.44

CONSIGNED BY: COLT PARKINSON, LEVELLAND, TX

Should calve by sale day to LFL Jackpot, a flushmate to LFL Gavin and 2022 After 5 Champion.

LFL Farrah 8064F is a flushmate to LFL Ellis who topped a past CHR sale going to Hunt Limousin Ranch. Farrah is a stout-made, easy fleshing cow with high growth and huge carcass numbers that are backed up by a top 5% rank for \$MI and 10% for MB. Farrah has weaned four calves at 777 lbs. that ratio'd 110.

# SPRING BREDS/PAIRS

## 50 LFL FAVORITE 8062F ET

COW LIM-FLEX(53/47.3) • HET POLLED (T) • HOMO BLACK (P-2)  
05/09/2018 • BLAW 8062F • LFF2149898

— MAGS ZODIAC  
— COLE DEPUTY 37D  
— COLE MISS PRODUCTION 874U

— EXAR DENVER 2002B  
— LFL CHARITY 5014C ET  
— PCC XOTIC 016 X

ACT BW: 81 ADJ WW: 638 ADJ YW: 1187  
ADJ RIB FAT: 0.53 ADJ REA: 16.89 ADJ \$IMF: 6.25

CONSIGNED BY: LAWRENCE FAMILY LIMOUSIN, ANTON, TX  
Should calve by sale day to LFL Dividend.

LFL Favorite 8062F is a maternal sister to LFL Fawn 8301 F, who is selling as Lot 2. Favorite has moderate growth with above average carcass numbers backed up with a top 15% rank for both \$MI and TI.

	EPDs	%Rnk	PE
CE:	11	40	12
BW:	1.8	70	0.8
WW:	62	65	64
YW:	100	55	106
MK:	24	55	27
TM:	55	60	59
CM:	5	70	7
SC:	.35	95	0.13
DC:	13	40	16
YG:	-.07	75	-0.02
CW:	35	35	30
RE:	.59	55	0.43
MB:	.55	10	0.52
FAT:	.01	85	0.02
\$MI:	69	15	68



LOT 52

## 51 LFL FREE LOVE 8070 F

COW PERCENTAGE(81/72.7) • HET POLLED (T) • HET BLACK (T)  
05/25/2018 • BLAW 8070F • NXF2152151

— EBFL YPSILANTI 420Y  
— LFL BOOMERANG 4050B  
— DJ XECUTIVE PRIVILEGE

— DHVO TREY 133R  
— LFL TWILIGHT 8007 U  
— EXLR GEANA 207J

ACT BW: 72 ADJ WW: 626 ADJ YW: 943  
ADJ RIB FAT: 0.54 ADJ REA: 14.08 ADJ \$IMF: 6.68

CONSIGNED BY: LAWRENCE FAMILY LIMOUSIN, ANTON, TX  
Should calve by sale day to LFL Jetson.

LFL Free Love 8070F is a 81% female that is moderate framed and easy fleshing. She has raised some really nice calves, and one was a very competitive show heifer.

	EPDs	%Rnk	PE
CE:	12	25	12
BW:	.8	45	1.0
WW:	61	55	74
YW:	85	70	115
MK:	4	95	12
TM:	34	95	49
CM:	6	50	6
SC:	.65	50	0.28
DC:	13	40	15
YG:	-.29	60	-0.10
CW:	1	95	14
RE:	.45	90	0.37
MB:	.07	50	0.61
FAT:	-.05	50	-0.01
\$MI:	53	55	75

## 52 CELL 1117J

COW LIM-FLEX(53/47.7) • HET POLLED (T) • HOMO BLACK (T)  
03/04/2021 • CELL 1117J • LFF2397600

— S A V HARVESTOR 0338  
— SSTO BEST BET 456B ET  
— ELCX TWILIGHT 114X

— MAGS Y SO TANGLED  
— TMCK BUBBLY 132B  
— JEPS DESTINED 10Z

ACT BW: 70 ADJ WW: 705 ADJ YW: 10

CONSIGNED BY: KINLEY COLLUM, GUTHRIE, OK:  
BRUCE BROOKS, 580-695-2036

Should calve by sale day to LFL Gavin 9137G.

A very competitive show female for Kinley Collum. Many time class winner at tough shows.

	EPDs	%Rnk	CALF
CE:	1.8	70	2.1
BW:	66	65	75
WW:	109	50	121
YW:	30	15	25
MK:	63	30	63
TM:	6	55	4
CM:	.89	60	0.60
SC:	14	35	13
DC:	.03	90	0.05
YG:	35	50	35
CW:	.39	90	0.32
RE:	.48	15	0.46
MB:	.02	90	0.02
FAT:	67	30	69
\$MI:	55	10	

## 53 LFL JOLIE 1206 J

COW LIM-FLEX(53/47.9) • HOMO POLLED (P-3) • HOMO BLACK (T)  
11/04/2021 • BLAW 1206J • LFF2480775

— MAGS CABLE  
— LFL ESQUIRE 7084E ET  
— AUTO BLISS 265Y

— RSKY WIPEOUT 0029  
— LFL BEATRICE 4110 B  
— LFL TADI 7099 T

ACT BW: 67 ADJ WW: 572 ADJ YW: 741  
ADJ RIB FAT: 0.15 ADJ REA: 8.9 ADJ \$IMF: 6.33

CONSIGNED BY: LAWRENCE FAMILY LIMOUSIN, ANTON, TX  
Should calve by sale day to LFL Kelvin 2067 K.

LFL Jolie 1206 J is a moderate-framed, easy fleshing female.

	EPDs	%Rnk	PE
CE:	13	20	14
BW:	2	75	1.0
WW:	54	95	67
YW:	81	95	110
MK:	18	95	22
TM:	45	95	55
CM:	6	55	7
SC:	.7	70	0.80
DC:	17	5	15
YG:	-.1	60	-0.05
CW:	12	95	27
RE:	.02	95	0.30
MB:	.4	25	0.57
FAT:	-.04	20	-0.01
\$MI:	62	55	72

## 54 LFL JULES 1246 J

COW LIM-FLEX(57/51.7) • HOMO POLLED (P-1) • HOMO BLACK (P-3)  
12/04/2021 • BLAW 1246J • LFF2480752

— COLE DEPUTY 37D  
— LFL GAMBLER 9058G ET  
— DJ CASSIE

— RSKY WIPEOUT 0029  
— LFL CHRISTINE 5066 C  
— LFL 7041 T

ACT BW: 72 ADJ WW: 663 ADJ YW: 902  
ADJ RIB FAT: 0.15 ADJ REA: 8.12 ADJ \$IMF: 4.46

CONSIGNED BY: LAWRENCE FAMILY LIMOUSIN, ANTON, TX  
Lot 54A: LFL Melody 4006 M, a 1/6/24, homo black, homo polled,

53% Lim-Flex heifer sired by LFL Jaguar 1044J ET. BW: 70 lbs. LFL Jules 1246 J is a maternal sister to LFL Kernal 2175 K, a high-selling bull in this year's bull sale going to Tyler Landreth. Jules is also moderate and easy fleshing.

	EPDs	%Rnk	CALF
CE:	10	55	6
BW:	2.2	80	2.9
WW:	55	85	59
YW:	84	85	92
MK:	24	55	25
TM:	52	75	55
CM:	4	85	1
SC:	.55	80	.6
DC:	12	55	14
YG:	.05	95	-12
CW:	23	75	31
RE:	-.09	95	.36
MB:	.34	30	.65
FAT:	-.02	45	-.04
\$MI:	59	60	73

# SPRING BREDS/PAIRS

## 55 LFL JUDGE JUDY 1249 J

COW LIM-FLEX(57/51.2) • HOMO POLLED (P-2) • HOMO BLACK (T)  
12/12/2021 • BLAW 1249J • LFF2480782

—MAGS AVIATOR  
LFL EDDIE 7019 E  
—LFL CANDY 5040C ET

—LFL COZMO 5011C ET  
LFL FATEFUL 8123 F  
—LFL 0084 X

ACT BW: 61    ADJ WW: 654    ADJ YW: 863  
ADJ RIB FAT: 0.28    ADJ REA: 9.34    ADJ \$IMF: 5.43

CONSIGNED BY: LAWRENCE FAMILY LIMOUSIN, ANTON, TX  
Lot 55A: LFL Mabel 4034 M, a 3/21/24, homo black, double  
polled, 55% Lim-Flex heifer sired by LFL Kelvin 2067 K. BW: 63 lbs.  
LFL Judge Judy is a daughter of LFL Fateful 8123 F selling as  
Lot 14.

	EPDs	%Rnk	CALF
CE:	12	30	13
BW:	-3	25	0
WW:	70	30	75
YW:	98	60	118
MK:	25	45	25
TM:	59	40	62
CM:	8	20	8
SC:	.8	55	.85
DC:	15	20	14
YG:	-.05	80	-.02
CW:	4	95	22
RE:	.28	95	.43
MB:	.3	40	.52
FAT:	.02	95	.03
\$MI:	62	40	72



LFL FATEFUL 8123 F • Dam of Lot 55, sells as Lot 14

## 56 LFL KEIRA 2002 K

COW LIM-FLEX(50/44.9) • HOMO POLLED (P-1) • HOMO BLACK (P-2)  
03/02/2022 • BLAW 2002K • LFF2523226

—MAGS CABLE  
LFL GUNSLINGER 9050G ET  
—LFL CHARITY 5014C ET

—SILVEIRAS STYLE 9303  
SSTO 0806H ET  
—SBLX XTRA SPECIAL

ACT BW: 73    ADJ WW: 601    ADJ YW: 859  
ADJ RIB FAT: 0.23    ADJ REA: 10.99    ADJ \$IMF: 5.63

CONSIGNED BY: LAWRENCE FAMILY LIMOUSIN, ANTON, TX  
Lot 56A: LFL Mike 4032 M, a 3/20/24, homo black, double  
polled, 51% Lim-Flex bull sired by LFL Kelvin 2067 K. BW: 63 lbs.  
LFL Keira 2002 K is a granddaughter of the popular SBLX  
Xtra Special.

	EPDs	%Rnk	CALF
CE:	10	55	12
BW:	2.4	85	1.3
WW:	63	60	72
YW:	97	65	118
MK:	23	60	24
TM:	55	60	60
CM:	7	35	7
SC:	.97	45	.94
DC:	12	55	12
YG:	-.13	60	-.06
CW:	32	45	37
RE:	.55	60	.56
MB:	.52	10	.63
FAT:	-.02	45	0
\$MI:	69	15	75

## 57 LFL KERI 2036 K

COW LIM-FLEX(37/33.5) • HOMO POLLED (P-1) • HOMO BLACK (T)  
03/28/2022 • BLAW 2036K • LFF2522873

—MAGS CABLE  
LFL GUNSLINGER 9050G ET  
—LFL CHARITY 5014C ET

—MAGS UNITE TOGETHER  
LFL HOT SAUCE 0123H ET  
—COMMERCIAL COW 344

ACT BW: 80    ADJ WW: 678    ADJ YW: 939  
ADJ RIB FAT: 0.33    ADJ REA: 12.01    ADJ \$IMF: 5.33

CONSIGNED BY: LAWRENCE FAMILY LIMOUSIN, ANTON, TX  
Lot 57A: LFL Mindy 4015 M, a 3/7/24, homo black, homo polled,  
43% Lim-Flex heifer sired by LFL Jaguar 1044J ET. BW: 68 lbs.  
LFL Keri 2036 K ranks in the top 4% for MB.

	EPDs	%Rnk	CALF
CE:	11	40	10
BW:	2.4	85	2.1
WW:	66	45	64
YW:	99	60	102
MK:	23	60	25
TM:	56	55	57
CM:	8	20	5
SC:			
DC:	13	40	15
YG:	-.09	70	-.13
CW:	24	70	26
RE:	.49	70	.6
MB:	.61	4	.75
FAT:	0	75	0
\$MI:	73	10	78

## 58 LFL KATIE 2038 K

COW LIM-FLEX(63/56.9) • HOMO POLLED (P-2) • HOMO BLACK (P-2)  
04/01/2022 • BLAW 2038K • LFF2522874

—MAGS CABLE  
LFL GUNSLINGER 9050G ET  
—LFL CHARITY 5014C ET

—LFL DIVIDEND 6084D ET  
LFL HARRIET 0060 H  
—LFL DEVINE 6022 D

ACT BW: 78    ADJ WW: 593    ADJ YW: 886  
ADJ RIB FAT: 0.32    ADJ REA: 11.56    ADJ \$IMF: 4.76

CONSIGNED BY: LAWRENCE FAMILY LIMOUSIN, ANTON, TX  
Lot 58A: LFL Mary 4012 M, a 3/4/24, homo black, homo polled,  
56% Lim-Flex heifer sired by LFL Jaguar 1044J ET. BW: 62 lbs.  
LFL Katie rans in the top 15% for MB, 20% for \$MI and 35% for  
RE & TI.

	EPDs	%Rnk	CALF
CE:	9	70	9
BW:	2.4	85	1.4
WW:	61	65	60
YW:	99	60	100
MK:	26	40	26
TM:	56	55	56
CM:	6	55	4
SC:	.6	75	.62
DC:	17	5	17
YG:	-.17	50	-.17
CW:	29	55	28
RE:	.71	35	.71
MB:	.47	15	.68
FAT:	-.01	60	-.01
\$MI:	67	20	74

## 59 LFL KACEY 2039 K

COW LIM-FLEX(37/33.5) • HOMO POLLED (P-1) • HOMO BLACK (T)  
04/01/2022 • BLAW 2039K • LFF2522875

—MAGS CABLE  
LFL GUNSLINGER 9050G ET  
—LFL CHARITY 5014C ET

—MAGS UNITE TOGETHER  
LFL HIPPIE GIRL 0111H  
—COMMERCIAL COW 195

ACT BW: 68    ADJ WW: 702    ADJ YW: 918  
ADJ RIB FAT: 0.35    ADJ REA: 11.16    ADJ \$IMF: 5.67

CONSIGNED BY: LAWRENCE FAMILY LIMOUSIN, ANTON, TX  
Lot 59A: LFL Mary Jane 4033 M, a 3/15/24, homo black, double  
polled, 45% Lim-Flex heifer sired by LFL Kelvin 2067 K. BW: 60 lbs.  
LFL Kacey has a moderate growth and above average MB.

	EPDs	%Rnk	CALF
CE:	11	40	13
BW:	2.8	90	.9
WW:	75	20	76
YW:	116	25	125
MK:	29	20	27
TM:	66	15	65
CM:	6	55	7
SC:			
DC:	13	40	13
YG:	.02	90	.02
CW:	29	55	35
RE:	.29	95	.43
MB:	.45	15	.6
FAT:	.01	85	.02
\$MI:	69	15	75

# SPRING BREDS/PAIRS

## 60 LFL KENDALL 2041 K

**COW** PERCENTAGE(79/68.7) • DOUBLE POLLED • HOMO BLACK (P-3)  
04/05/2022 • BLAW 2041K • NXF2522876

— TMCK CASH FLOW 247C  
LFL GAMER 9116G ET  
— LVLS 9066U

— DHVO TREY 133R  
LFL ZIP 2039Z  
— LFL OLIVE 9026 W

ACT BW: 69    ADJ WW: 683    ADJ YW: 942  
ADJ RIB FAT: 0.4    ADJ REA: 12.51    ADJ \$IMF: 4.01

CONSIGNED BY: LAWRENCE FAMILY LIMOUSIN, ANTON, TX

Lot 60A: LFL Morgan 4016 M, a 3/7/24, double black, double polled, 80% Limousin heifer sired by COLE Fortune 12F. BW: 66 lbs. LFL Kendall 2041 K is a high-percentage daughter of the popular LFL Gamer. Be sure and check out her heifer calf sired by the popular COLE Fortune.

	EPDs	%Rnk	CALF
CE:	11	35	14
BW:	-.7	15	-1.5
WW:	71	20	70
YW:	105	30	109
MK:	28	25	28
TM:	63	20	63
CM:	6	50	9
SC:	1	20	.3
DC:	14	30	12
YG	-.23	65	-.21
CW:	26	45	25
RE:	.69	65	.8
MB:	.22	30	.16
FAT:	-.03	65	-.01
\$MI:	61	25	59

GE-EPDs

## 61 LFL KATHERINE 2037 K

**COW** LIM-FLEX(51/46) • HOMO POLLED (P-1) • HOMO BLACK (P-3)  
04/12/2022 • BLAW 2037K • LFF2523233

— MAGS CABLE  
LFL GUNSLINGER 9050G ET  
— LFL CHARITY 5014C ET

— COLE DEPUTY 37D  
LFL HERMOSA 0023H ET  
— LFL DOUBLE TAKE 6100 D

ACT BW: 76    ADJ WW: 538    ADJ YW: 888  
ADJ RIB FAT: 0.32    ADJ REA: 11.31    ADJ \$IMF: 8.075

CONSIGNED BY: LAWRENCE FAMILY LIMOUSIN, ANTON, TX

Lot 61A: LFL Molly 4014 M, a 3/7/24, double black, homo polled, 50% Lim-Flex heifer sired by LFL Jaguar 1044J ET. BW: 62 lbs. LFL Katherine ranks in the top 1% for MB, 2% for \$MI and 35% for TI.

	EPDs	%Rnk	CALF
CE:	11	40	10
BW:	1.2	55	.9
WW:	51	95	56
YW:	80	90	91
MK:	24	55	25
TM:	50	85	53
CM:	6	55	4
SC:	.65	75	.65
DC:	13	40	15
YG	-.05	80	-.11
CW:	22	75	25
RE:	.38	85	.55
MB:	.86	1	.88
FAT:	.01	85	0
\$MI:	77	2	80

GE-EPDs

## 62 LFL KAMRYN 2051 K

**COW** PERCENTAGE(83/75.2) • HOMO POLLED (T) • HOMO BLACK (P-3)  
04/30/2022 • BLAW 2051K • NXF2522881

— MAGS AVIATOR  
LFL DIVIDEND 6084D ET  
— DJ XECUTIVE PRIVILEGE

— KRVN PACESETTER 053P  
LFL 7024 T  
— LFL 5045 R

ACT BW: 64    ADJ WW: 596    ADJ YW: 824  
ADJ RIB FAT: 0.28    ADJ REA: 11.39    ADJ \$IMF: 3.675

CONSIGNED BY: LAWRENCE FAMILY LIMOUSIN, ANTON, TX

Should calve by sale day to LFL Kelvin 2067 K.

LFL Kamryn 2051 K is a low birthweight, moderately framed female that is heavy bred to the low birthweight bull LFL Kelvin.

	EPDs	%Rnk	PE
CE:	15	15	15
BW:	-2.1	25	-1.1
WW:	38	95	59
YW:	53	95	96
MK:	30	5	28
TM:	49	60	57
CM:	9	25	9
SC:	.1	95	0.50
DC:	9	85	11
YG	-.1	60	-0.05
CW:	2	95	22
RE:	.34	90	0.46
MB:	.1	80	0.42
FAT:	.01	70	0.02
\$MI:	46	95	64

GE-EPDs

## 64 LFL KIMBERLY 2078 K

**COW** LIM-FLEX(60/53.8) • HOMO POLLED (T) • HOMO BLACK (P-2)  
05/21/2022 • BLAW 2078K • LFF2522894

— MAGS CABLE  
LFL ESQUIRE 7084E ET  
— AUTO BLISS 265Y

— MAGS Y-AXIS  
LFL GEORGIA 9051G ET  
— KRVN TORCH 259T

ACT BW: 70    ADJ WW: 600    ADJ YW: 904  
ADJ RIB FAT: 0.3    ADJ REA: 10.43    ADJ \$IMF: 4.27

CONSIGNED BY: LAWRENCE FAMILY LIMOUSIN, ANTON, TX

Lot 64A: LFL Mason 4039 M, a 3/24/24, homo black, homo polled, 55% Lim-Flex bull sired by LFL Jaguar 1044J ET. BW: 60 lbs. LFL Kimberly 2078 K has a low birthweight with moderate growth and a real maternal look.

	EPDs	%Rnk	CALF
CE:	13	20	11
BW:	-.6	20	.3
WW:	64	55	63
YW:	108	40	106
MK:	20	80	23
TM:	52	75	54
CM:	8	20	5
SC:	.8	55	.72
DC:	13	40	15
YG	-.02	85	-.1
CW:	10	95	18
RE:	0	95	.35
MB:	.27	45	.58
FAT:	-.01	60	-.01
\$MI:	60	55	71

GE-EPDs

## 63 LFL KENZIE 2068 K

**COW** LIM-FLEX(74/66.7) • HOMO POLLED (P-1) • HOMO BLACK (P-3)  
05/13/2022 • BLAW 2068K • LFF2522891

— MAGS AVIATOR  
LFL DIVIDEND 6084D ET  
— DJ XECUTIVE PRIVILEGE

— LFL BOOMERANG 4050B  
LFL FAE MAE 8087 F  
— LFL 7024 T

ACT BW: 60    ADJ WW: 477    ADJ YW: 787  
ADJ RIB FAT: 0.32    ADJ REA: 12.13    ADJ \$IMF: 4.09

CONSIGNED BY: LAWRENCE FAMILY LIMOUSIN, ANTON, TX

Lot 63A: LFL Milton 4051 M, a 4/2/24, double black, double polled, 64% Lim-Flex bull sired by LFL Kelvin 2067 K. BW: 64 lbs. LFL Kenzie is a moderately framed, easy fleshing, first-calf heifer with a near perfect udder. Her dam sells as Lot 43.

	EPDs	%Rnk	CALF
CE:	15	5	14
BW:	-1.9	10	-1
WW:	45	95	62
YW:	66	95	102
MK:	22	70	24
TM:	44	95	55
CM:	9	10	8
SC:	.35	95	.62
DC:	16	10	14
YG	-.17	50	-.08
CW:	0	95	20
RE:	.28	95	.42
MB:	.26	45	.5
FAT:	-.02	45	0
\$MI:	54	80	68

GE-EPDs



# SPRING BREDS/PAIRS

**65**

## LFL KALI 2109 K

COW

LIM-FLEX(42/38) • HOMO POLLED (P-1) • HOMO BLACK (P-1)  
06/12/2022 • BLAW 2109K • LFF2522987

— MAGS AVIATOR  
**LFL EDDIE 7019 E**  
— LFL CANDY 5040C ET

— CHR ASA 017A  
**LFL ELABORATE 7406E**  
— COMMERCIAL COW 175

GE-EPDs

ACT BW: 74    ADJ WW: 727    ADJ YW: 992  
ADJ RIB FAT: 0.41    ADJ REA: 10.25    ADJ \$IMF: 5.035

CONSIGNEE BY: LAWRENCE FAMILY LIMOUSIN, ANTON, TX

Lot 65A: LFL Marie 4044 M, a 3/24/24, homo black, double polled, 47% Lim-Flex heifer sired by LFL Kelvin 2067 K. BW: 64 lbs. LFL Kali 2109 K has above average growth that ranks in the top 20% for MB.

	EPDs	%Rnk	CALF
CE:	9	70	11
BW:	1.2	55	.7
WW:	75	20	78
YW:	112	30	126
MK:	23	60	24
TM:	60	35	63
CM:	6	55	7
SC:			
DC:	12	55	12
YG:	.15	95	.08
CW:	23	75	32
RE:	-.03	95	.27
MB:	.44	20	.59
FAT:	.03	95	.03
\$MI:	67	20	74

**66**

## LFL KATRINA 2100 K

COW

LIM-FLEX(46/41.3) • HOMO POLLED (P-1) • HET BLACK (T)  
06/16/2022 • BLAW 2100K • LFF2522908

— MAGS AVIATOR  
**LFL EDDIE 7019 E**  
— LFL CANDY 5040C ET

— LH AFTER SHOCK 119A  
**LFL FERVENT 8401F**  
— COMMERCIAL COW 182

GE-EPDs

ACT BW: 67    ADJ WW: 712    ADJ YW: 974  
ADJ RIB FAT: 0.27    ADJ REA: 10.45    ADJ \$IMF: 3.605

CONSIGNEE BY: LAWRENCE FAMILY LIMOUSIN, ANTON, TX

Lot 66A: LFL Margaret 4035 M, a 3/21/24, double black, double polled, 49% Lim-Flex heifer sired by LFL Kelvin 2067 K. BW: 58 lbs. LFL Katrina 2100 K has a low BW EPD and ranks in the top 10% for DOC and 35% for MB.

	EPDs	%Rnk	CALF
CE:	12	30	13
BW:	-.9	15	-.8
WW:	60	70	69
YW:	90	75	113
MK:	21	75	23
TM:	50	85	57
CM:	6	55	7
SC:	.5	80	.7
DC:	16	10	14
YG:	.01	90	.01
CW:	10	95	26
RE:	.09	95	.33
MB:	.33	35	.54
FAT:	.01	85	.02
\$MI:	60	50	71



# OPEN HEIFERS



LOT 67



LOT 68

**67**

## LFL LADONNA 3112 L

COW

LIM-FLEX(67/60.8) • HET POLLED (T) • HOMO BLACK (P-3)  
06/27/2023 • TKJP 3112L • LFF2604736

— MAGS AVIATOR  
LFL DIVIDEND 6084D ET  
— DJ XECUTIVE PRIVILEGE

— LFL DELUXE EDITION 6029D ET  
LFL FOOL'S GOLD 8115 F  
— LFL DECORATOR 6117 D

GE-EPDs

ACT BW: 84    ADJ WW: 621    ADJ YW:

CONSIGED BY: COLT PARKINSON, LEVELLAND, TX

LFL reserves the right for two successful flushes with a minimum of six embryos each flush at the buyer's convenience and seller's expense.

LFL Ladonna 3112 L is phenotypically near perfect, sound structured with a wide pin set and has a long, square hip. Ladonna's dam, LFL Fools Gold, was Third Overall Bred & Owned Heifer for Tucker at the NJLSC Party Of The Century in West Monroe. We believe Ladonna can be very competitive in any setting but her true advantage could be in the P&G Show in Tulsa. Her dam, LFL Fools Gold, sells as Lot 44 and is bred back for a full sib to Ladonna.

	EPDs	%Rnk
CE:	9	70
BW:	3.3	95
WW:	77	20
YW:	128	15
MK:	22	80
TM:	60	50
CM:	4	85
SC:	.23	95
DC:	18	3
YG:	.06	95
CW:	25	80
RE:	.24	95
MB:	.37	30
FAT:	.03	95
\$MI:	67	30

**68**

## LFL LOVE BUG 3128L ET

COW

LIM-FLEX(67/60.2) • HOMO POLLED (T) • HET BLACK (T)  
09/06/2023 • BLAW 3128L • LFF2798909

— FWLY CAN DO  
RATLIFF JUMP START 340J ET  
— RIVERSTONE CHARMED

— RSKY WIPEOUT 0029  
LFL BRENDA 4024 B  
— LFL TWILIGHT 8007 U

GE-EPDs

ACT BW: 84    ADJ WW: 756    ADJ YW:

CONSIGED BY: LAWRENCE FAMILY LIMOUSIN, ANTON, TX

LFL reserves the right for two successful flushes with a minimum of six embryos each flush at the buyer's convenience and seller's expense.

LFL Love Bug 3128 L is a flushmate to Lot 69 LFL Lord Have Mercy and Lot 71 LFL Look Me Up. Love Bug has the brood cow look with a cool front end and stands on a huge foot and walks like a cat! Her dam, LFL Brenda, is a flushmate to LFL Ladonna who was shown at Junior Nationals in 2014 and won a Division shown by Caitlyn Skiles. Love Bug is also a daughter of Ratliff Jump Start, the 2023 Cattleman's Congress Grand Champion Bull and son of Riverstone Charmed.

	EPDs	%Rnk
CE:	8	85
BW:	3.9	95
WW:	65	65
YW:	97	80
MK:	18	95
TM:	51	90
CM:	4	85
SC:	.8	60
DC:	14	35
YG:	-.28	20
CW:	26	80
RE:	.71	40
MB:	-.13	95
FAT:	-.05	10
\$MI:	47	95

# OPEN HEIFERS



LOT 69



LOT 70

## 69 LFL LORD HAVE MERCY 3161L ET

COW

LIM-FLEX(67/60.2) • HOMO POLLED (T) • HET BLACK (T)  
09/28/2023 • BLAW 3161L • LFF2798901

— FWLY CAN DO  
RATLIFF JUMP START 340J ET  
— RIVERSTONE CHARMED

— RSKY WIPEOUT 0029  
LFL BRENDA 4024 B  
— LFL TWILIGHT 8007 U

GE-EPDs

ACT BW: 91    ADJ WW: 854    ADJ YW:

CONSIGNEE BY: LAWRENCE FAMILY LIMOUSIN, ANTON, TX

LFL reserves the right for two successful flushes with a minimum of six embryos each flush at the buyer's convenience and seller's expense.

LFL Lord Have Mercy 3161 L is a flushmate to Lot 68 LFL Love Bug and Lot 71 LFL Look Me Up. Lord Have Mercy is what Lee Roy put in his text when he tagged and weighed this heifer calf. You can tell by her picture and video what he meant—wide and square hip with a beautiful neck set! Make sure to study her video and get her on your buyer's list.

	EPDs	%Rnk
CE:	8	85
BW:	3.8	95
WW:	59	90
YW:	86	95
MK:	18	95
TM:	48	95
CM:	4	85
SC:	.8	60
DC:	14	35
YG:	-.16	45
CW:	22	90
RE:	.43	85
MB:	-.07	90
FAT:	-.03	30
\$MI:	52	95

## 70 LFL LORNA DOONE 3134L ET

COW

LIM-FLEX(64/57.7) • HOMO POLLED (P-2) • HOMO BLACK (P-2)  
09/29/2023 • BLAW 3134L • LFF2798925

— TASF CROWN ROYAL 960C ET  
TASF HEINEKEN 405H ET  
— PLEASANT VALLEY ELSA 1439

— MAGS AVIATOR  
LFL FALLEN ANGEL 8114F ET  
— ALMA JO DHVO 723R

GE-EPDs

ACT BW: 73    ADJ WW: 754    ADJ YW:

CONSIGNEE BY: LAWRENCE FAMILY LIMOUSIN, ANTON, TX

LFL reserves the right for two successful flushes with a minimum of six embryos each flush at the buyer's convenience and seller's expense.

LFL Lorna Doone 3134 L is a result of our first TASF Heineken mating and we certainly are not disappointed. Their dam is LFL Fallen Angel, who is co-owned with Barton Limousin and was successfully shown by Colton Barton. Lorna Doone has a big swooping rib shape with a wide and square hip. Her impeccable structure and side view profile make her a real show heifer prospect!

	EPDs	%Rnk
CE:	10	55
BW:	1.8	70
WW:	60	85
YW:	94	85
MK:	21	85
TM:	51	90
CM:	6	55
SC:	.53	85
DC:	12	65
YG:	-.08	70
CW:	12	95
RE:	.39	90
MB:	.34	40
FAT:	.01	85
\$MI:	61	60

# OPEN HEIFERS



LOT 71

## 71 LFL LOOK ME UP 3149L ET

COW LIM-FLEX(67/60.2) • HET POLLED (T) • HET BLACK (T)  
10/02/2023 • BLAW 3149L • LFF2798910

—FWLY CAN DO  
RATLIFF JUMP START 340J ET  
—RIVERSTONE CHARMED

—RSKY WIPEOUT 0029  
LFL BRENDA 4024 B  
—LFL TWILIGHT 8007 U

GE-EPDs

ACT BW: 88    ADJ WW: 678    ADJ YW:

CONSIGNED BY: LAWRENCE FAMILY LIMOUSIN, ANTON, TX

LFL reserves the right for two successful flushes with a minimum of six embryos each flush at the buyer's convenience and seller's expense. LFL Look Me Up 3178 L is a flushmate to Lot 68 LFL Love Bug and Lot 69 LFL Lord Have Mercy. Look Me Up is the greenest heifer of this flush but is catching up nicely. She has all of the pieces to be as successful as any heifer in the offering.

	EPDs	%Rnk
CE:	7	95
BW:	3.6	95
WW:	58	90
YW:	90	90
MK:	18	95
TM:	48	95
CM:	3	95
SC:	.8	60
DC:	16	10
YG	-.21	35
CW:	25	80
RE:	.59	60
MB:	-.15	95
FAT:	-.03	30
\$MI:	44	95



LOT 72

## 72 LFL LIBERTY BELLE 3145L ET

COW LIM-FLEX(72/65.3) • DOUBLE POLLED • HOMO BLACK (P-1)  
10/03/2023 • TKJP 3145L • LFF2798906

—FWLY CAN DO  
RATLIFF JUMP START 340J ET  
—RIVERSTONE CHARMED

—LFL DELUXE EDITION 6029D ET  
LFL GABRIELLA 9097G ET  
—MAGS DE LOREAN ET

GE-EPDs

ACT BW: 84    ADJ WW: 784    ADJ YW:

CONSIGNED BY: TUCKER PARKINSON, LEVELLAND, TX

LFL reserves the right for two successful flushes with a minimum of six embryos each flush at the buyer's convenience and seller's expense. These two flushmates have as many purple banners in their pedigrees as any heifers in the offering. Their dam is a flushmate to both LFL Felicia and LFL Havannah. Felicia was the Champion Bred & Owned Heifer in Springfield in 2020 and Champion Heifer in San Antonio in 2021. Havannah was Reserve Supreme Champion in 2023 at Houston, both shown by Tucker.

	EPDs	%Rnk
CE:	9	70
BW:	1.6	65
WW:	67	60
YW:	106	60
MK:	23	70
TM:	56	70
CM:	4	85
SC:	.89	60
DC:	16	10
YG	-.04	80
CW:	40	30
RE:	.57	65
MB:	.15	80
FAT:	0	70
\$MI:	56	85



LOT 73

## 73 LFL LONESOME DOVE 3153L ET

COW LIM-FLEX(72/65.3) • HOMO POLLED (T) • HOMO BLACK (P-1)  
10/11/2023 • TKJP 3153L • LFF2798908

—FWLY CAN DO  
RATLIFF JUMP START 340J ET  
—RIVERSTONE CHARMED

—LFL DELUXE EDITION 6029D ET  
LFL GABRIELLA 9097G ET  
—MAGS DE LOREAN ET

GE-EPDs

ACT BW: 83    ADJ WW: 665    ADJ YW:

CONSIGNED BY: TUCKER PARKINSON, LEVELLAND, TX

LFL reserves the right for two successful flushes with a minimum of six embryos each flush at the buyer's convenience and seller's expense. The sire of these two sisters is Ratliff Jump Start who was the Grand Champion Bull in Oklahoma City in 2023 and flushmate to Ratliff's Howboutit, the 2022 Supreme Champion Heifer at NAILE shown by Sara Sullivan. Liberty Belle will get her share of purple banners for her new owner!

	EPDs	%Rnk
CE:	7	95
BW:	1.5	65
WW:	70	45
YW:	110	50
MK:	23	70
TM:	58	60
CM:	3	95
SC:	.89	60
DC:	14	35
YG	-.15	50
CW:	52	10
RE:	.88	20
MB:	-.07	95
FAT:	-.02	40
\$MI:	50	95

# BULLS



LOT 74



LOT 74



LOT 75

**74**

BULL

## PCOL LEONARDO

LIM-FLEX(57/51.5) • POLLED • HOMO BLACK (P-1)  
03/18/2023 • PCOL 01L • LFM2608373

— LFL DELUXE EDITION 6029D ET  
LFL GAVIN 9137 G  
— LFL ELEANOR 7103E ET

— SILVEIRAS STYLE 9303  
SSTO 0810H ET  
— SBLX XTRA SPECIAL

ACT BW: 72	ADJ WW: 659	ADJ YW: 1327	ADJ SC:
YFS:	ADJ RIB FAT:	ADJ REA:	ADJ \$IMF:

CONSIGNEE BY: PEYTON COLLUM, GUTHRIE, OK:  
BRUCE BROOKS, 580-695-2036

Leonardo is an attractive, soggy, stout-made big time herd sire prospect. He was the Reserve Champion Limousin Bull at the 2024 Fort Worth Livestock Show. His dam sells as Lot 42.

	EPDs	%Rnk
CE:	8	85
BW:	2.3	80
WW:	73	35
YW:	114	40
MK:	20	90
TM:	56	70
CM:	4	85
SC:	.62	80
DC:	11	80
YG:	-.03	80
CW:	34	50
RE:	.42	85
MB:	.33	40
FAT:	0	70
\$MI:	64	40

**75**

BULL

## LFL LAZER SHARP 3084L ET

LIM-FLEX(39/35.6) • HOMO POLLED (P-1) • HOMO BLACK (P-2)  
05/18/2023 • BLAW 3084L • LFM2608856

— DAMERON FIRST CLASS  
EXAR BLUE CHIP 1877B  
— GREENS PRINCESS 1012

— MAGS AVIATOR  
LFL FALLEN ANGEL 8114F ET  
— ALMA JO DHVO 723R

ACT BW: 85	ADJ WW: 757	ADJ YW: 1226	ADJ SC: 37.6
YFS:	ADJ RIB FAT:	ADJ REA:	ADJ \$IMF:

CONSIGNEE BY: LAWRENCE FAMILY LIMOUSIN, ANTON, TX  
LFL Lazer Sharp 3084 L is very complete, moderately framed and easy fleshing. He ranks in the top 20% for MB and is also a flushmate to Lot 78, LFL Lukenbach.

MB

	EPDs	%Rnk
CE:	9	70
BW:	1.7	70
WW:	58	90
YW:	90	90
MK:	18	95
TM:	46	95
CM:	7	35
SC:	.47	90
DC:	15	20
YG:	.01	90
CW:	25	80
RE:	.27	95
MB:	.46	20
FAT:	.01	85
\$MI:	64	45

# BULLS



LOT 76



LOT 77

**76**

## LFL LANDO 3081 L

BULL

LIM-FLEX(58/52.3) • HET POLLED (T) • HOMO BLACK (P-2)  
05/15/2023 • TKJP 3081L • LFM2604707

G

—MAGS CABLE  
LFL ESQUIRE 7084E ET  
—AUTO BLISS 265Y

C

—HUBB BULLETPROOF  
LFL ELEGANT 7126E  
—DJ CASSIE

MB

GE-EPDs

ACT BW: 84    ADJ WW: 730    ADJ YW: 1178    ADJ SC: 34.9  
YFS:    ADJ RIB FAT:    ADJ REA:    ADJ \$IMF:

	EPDs	%Rnk
CE:	10	55
BW:	1.4	60
WW:	74	30
YW:	121	25
MK:	18	95
TM:	55	75
CM:	6	55
SC:	.95	50
DC:	18	3
YG:	.04	95
CW:	36	45
RE:	.35	90
MB:	.51	15
FAT:	.01	85
\$MI:	71	15

CONSIGNED BY: TUCKER PARKINSON, LEVELLAND, TX

LFL Lando 3081 L was a member of the 2024 Grand Champion Pen at Oklahoma City. Lando is a maternal brother to LFL Goldilocks, LFL Judson and LFL Kingsbury, all which were successfully shown by Tucker. Judson was the 2022 Grand Champion Bred & Owned Bull and is now working in the Burnett Brothers herd; Goldilocks is now a donor cow at Lawrence Family Limousin; and Kingsbury was Division Champion in 2023 at Rapid City. If circumstances were different, there is a good chance Lando would be going to Tulsa!

**77**

## LFL LAZLO 3078 L

BULL

LIM-FLEX(71/63.8) • HOMO POLLED (P-1) • HOMO BLACK (P-3)  
05/15/2023 • CWPC 3078L • LFM2604705

B

—COLE DEPUTY 37D  
LFL JETSON 1300J ET  
—AUTO BLISS 265Y

MB

—LFL DELUXE EDITION 6029D ET  
LFL FIESTA 8126 F  
—LFL DANDY 6095 D

GE-EPDs

ACT BW: 72    ADJ WW: 729    ADJ YW: 1144    ADJ SC: 31.9  
YFS:    ADJ RIB FAT:    ADJ REA:    ADJ \$IMF:

	EPDs	%Rnk
CE:	10	55
BW:	-.7	15
WW:	65	65
YW:	104	65
MK:	21	85
TM:	53	85
CM:	3	95
SC:	.2	95
DC:	16	10
YG:	.01	90
CW:	24	85
RE:	.37	90
MB:	.73	2
FAT:	.03	95
\$MI:	76	4

CONSIGNED BY: COLT PARKINSON, LEVELLAND, TX

LFL Lazlo 3078 L is a son of LFL Fiesta 8126 F who was Reserve Grand Champion Limousin Female in West Monroe in 2021! LFL Kryptonite is a maternal brother and was the 2024 Grand Champion Bull in Ft. Worth. Lazlo should work well on first-calf heifers and also ranks in the top 2% for Marbling.

# BULLS

## 78 LFL LUKENBACH 3079L ET

**BULL** LIM-FLEX(39/35.6) • HOMO POLLED (P-1) • HOMO BLACK (P-2)  
05/15/2023 • BLAW 3079L • LFM2608853

**B**

— DAMERON FIRST CLASS  
**EXAR BLUE CHIP 1877B**  
— GREENS PRINCESS 1012

— MAGS AVIATOR  
**LFL FALLEN ANGEL 8114F ET**  
— ALMA JO DHVO 723R

**GE-EPDs**

**ACT BW:** 88    **ADJ WW:** 714    **ADJ YW:** 1261    **ADJ SC:** 35.9  
**YFS:**    **ADJ RIB FAT:**    **ADJ REA:**    **ADJ \$IMF:**

**CONSIGNED BY: LAWRENCE FAMILY LIMOUSIN, ANTON, TX**

LFL Lukenbach 3079 L is a son of the very popular LFL Fallen Angel who is owned with Barton Cattle Co. and sired by EXAR Blue Chip. Sound, moderate framed and easy fleshing best describes Lukenbach. LFL Lukenbach is a flushmate to LFL Lazer Sharp who sells as Lot 75.

	EPDs	%Rnk
CE:	7	95
BW:	1.3	60
WW:	67	60
YW:	104	65
MK:	18	95
TM:	51	90
CM:	5	70
SC:	.47	90
DC:	15	20
YG	-.01	85
CW:	17	95
RE:	.17	95
MB:	.29	50
FAT:	0	70
\$MI:	61	60



**LFL FALLEN ANGEL 8114F ET • Dam of Lot 78**

## 79 LFL LANDON 3069 L

**BULL** LIM-FLEX(41/36.9) • HOMO POLLED (P-3) • HOMO BLACK (P-2)  
05/05/2023 • BLAW 3069L • LFM2604696

**B**

— MAGS CABLE  
**LFL ESQUIRE 7084E ET**  
— AUTO BLISS 265Y

— MAGS UNITE TOGETHER  
**LFL HIPPIE GIRL 0111H**  
— COMMERCIAL COW 195

**GE-EPDs**

**ACT BW:** 73    **ADJ WW:** 813    **ADJ YW:** 1436    **ADJ SC:** 39.6  
**YFS:**    **ADJ RIB FAT:**    **ADJ REA:**    **ADJ \$IMF:**

**CONSIGNED BY: LAWRENCE FAMILY LIMOUSIN, ANTON, TX**

LFL Landon 3069 L should work well on first-calf heifers, has above average growth and ranks in the top 2% for MB and 4% for \$MI.

	EPDs	%Rnk
CE:	14	10
BW:	-.1	25
WW:	70	45
YW:	110	50
MK:	25	50
TM:	60	50
CM:	9	15
SC:		
DC:	13	50
YG	.07	95
CW:	19	95
RE:	-.01	95
MB:	.72	2
FAT:	.01	85
\$MI:	77	4

## 80 LFL LESTER 3070 L

**BULL** LIM-FLEX(60/54.2) • HOMO POLLED (P-3) • HOMO BLACK (P-2)  
05/05/2023 • BLAW 3070L • LFM2604697

**B**

— MAGS CABLE  
**LFL ESQUIRE 7084E ET**  
— AUTO BLISS 265Y

— LFL EDDIE 7019 E  
**LFL GENTEEL LADY 9079 G**  
— LFL ELISE 7021E ET

**GE-EPDs**

**ACT BW:** 80    **ADJ WW:** 565    **ADJ YW:** 1220    **ADJ SC:** 39.5  
**YFS:**    **ADJ RIB FAT:**    **ADJ REA:**    **ADJ \$IMF:**

**CONSIGNED BY: LAWRENCE FAMILY LIMOUSIN, ANTON, TX**

LFL Lester 3070 L has average growth and ranks in the top 5% for DC & MB and the top 10% for \$MI.

	EPDs	%Rnk
CE:	10	55
BW:	1.6	65
WW:	71	40
YW:	111	45
MK:	22	80
TM:	57	65
CM:	6	55
SC:	.53	85
DC:	17	5
YG	.06	95
CW:	27	75
RE:	.25	95
MB:	.61	5
FAT:	.03	95
\$MI:	73	10

## A TRIBUTE TO TUCKER

Oct. 29, 2007–Oct. 1, 2023

We give thanks for the time we had with him. We honor and embrace his legacy and cherish the memories he left us.

Wise beyond his years and equally mature, whether it was mating cows, playing sports or preparing for the next big cattle show, Tucker was always 100% committed to the task at hand.

Tucker was the friend everyone wanted. He was kind, loyal and genuinely cared for others. Many friends referred to him as the most kindhearted young adult they knew. He never shied away from doing the hard work or standing up for someone in need.

He loved many things, was not afraid to try new things and always gave his all. But nothing made him as happy as being in the barn and the pasture working with his show string or studying new genetics to incorporate into his herd. Tucker's work ethic was evident in all his activities and those around him noticed.

Our lives are better because of Tucker and we will cherish every memory and smile. He may be gone, but he will never be forgotten.



# BULLS



LFL ESQUIRE 7084E ET • Sire of Lot 81

## 81 LFL LENNY 3042 L

**BULL** LIM-FLEX(41/36.9) • HOMO POLLED (P-3) • HOMO BLACK (P-2)  
04/16/2023 • BLAW 3042L • LFM2604190

**B**

— MAGS CABLE  
LFL ESQUIRE 7084E ET  
— AUTO BLISS 265Y

**MB**

— MAGS UNITE TOGETHER  
LFL HIT PARADE 0110H  
— COMMERCIAL COW 117

GE-EPDs

ACT BW: 77    ADJ WW: 601    ADJ YW: 1179    ADJ SC: 35.5  
YFS:            ADJ RIB FAT:            ADJ REA:            ADJ \$IMF:

CONSIGNED BY: LAWRENCE FAMILY LIMOUSIN, ANTON, TX  
LFL Lenny 3042 L should work well on first-calf heifers and ranks in the top 15% for BW & MB.

	EPDs	%Rnk
CE:	13	20
BW:	-.8	15
WW:	63	75
YW:	104	65
MK:	20	90
TM:	51	90
CM:	8	20
SC:		
DC:	16	10
YG:	.01	90
CW:	.33	55
RE:	.38	90
MB:	.51	15
FAT:	.01	85
\$MI:	68	25

## 82 LFL LORENZ 3082 L

**BULL** LIM-FLEX(58/52.6) • HOMO POLLED (P-1) • HOMO BLACK (P-3)  
05/18/2023 • BLAW 3082L • LFM2604708

**G**

— LFL DELUXE EDITION 6029D ET  
LFL JACKPOT 1032J ET  
— LFL ELEANOR 7103E ET

**C**

— COLE DEPUTY 37D  
LFL HERMOSA 0023H ET  
— LFL DOUBLE TAKE 6100 D

**MB**

GE-EPDs

ACT BW: 88    ADJ WW: 798    ADJ YW: 1480    ADJ SC: 37.0  
YFS:            ADJ RIB FAT:            ADJ REA:            ADJ \$IMF:

CONSIGNED BY: LAWRENCE FAMILY LIMOUSIN, ANTON, TX  
LFL Lorenz 3082 L has impressive growth, marbling and \$MI. He ranks in the top 5% or better for WW, YW, MB & \$MI.

	EPDs	%Rnk
CE:	6	95
BW:	5.7	95
WW:	88	3
YW:	140	5
MK:	20	90
TM:	64	25
CM:	2	95
SC:	.35	95
DC:	14	35
YG:	-.03	80
CW:	.37	40
RE:	.47	80
MB:	.74	2
FAT:	.00	70
\$MI:	84	1

## 83 LFL LIONEL 3051 L

**BULL** LIM-FLEX(58/52.3) • HOMO POLLED (P-1) • HOMO BLACK (P-3)  
04/23/2023 • BLAW 3051L • LFM2604331

**M**

— MAGS AVIATOR  
LFL DIVIDEND 6084D ET  
— DJ XECUTIVE PRIVILEGE

— MAGS Y-AXIS  
MAGS BRANDEIS ET  
— MAGS UVALDA

GE-EPDs

ACT BW: 82    ADJ WW: 709    ADJ YW: 1305    ADJ SC: 36.4  
YFS:            ADJ RIB FAT:            ADJ REA:            ADJ \$IMF:

CONSIGNED BY: LAWRENCE FAMILY LIMOUSIN, ANTON, TX  
LFL Lionel 3051 L's dam, MAGS Brandeis, is one of the heaviest milking cows at Lawrence Family Limousin. Lionel ranks in the top 10% for DC and 15% for MK.

	EPDs	%Rnk
CE:	10	55
BW:	.5	40
WW:	62	80
YW:	98	75
MK:	30	15
TM:	61	40
CM:	7	35
SC:	.5	85
DC:	16	10
YG:	.04	95
CW:	.24	85
RE:	.21	95
MB:	.21	65
FAT:	.02	90
\$MI:	56	85



LOT 84

## 84 LFL LUCA 3004 L

**BULL** LIM-FLEX(55/49.9) • HOMO POLLED (P-1) • HOMO BLACK (P-1)  
02/28/2023 • BLAW 3004L • LFM2603657

**G**

— MAGS AVIATOR  
LFL EDDIE 7019 E  
— LFL CANDY 5040C ET

**C**

— SILVEIRAS STYLE 9303  
SSTO 0806H ET  
— SBLX XTRA SPECIAL

GE-EPDs

ACT BW: 58    ADJ WW: 745    ADJ YW: 1255    ADJ SC: 38.8  
YFS:            ADJ RIB FAT:            ADJ REA:            ADJ \$IMF:

CONSIGNED BY: LAWRENCE FAMILY LIMOUSIN, ANTON, TX  
LFL Luca 3004 L is sired by SSTO 0806 H, the Style x SBLX Extra Special daughter. Luca has above average growth and his CW EPD ranks in the top 20%.

	EPDs	%Rnk
CE:	9	70
BW:	2.7	90
WW:	74	30
YW:	112	45
MK:	20	90
TM:	56	70
CM:	5	70
SC:	.62	80
DC:	10	90
YG:	.09	95
CW:	.45	20
RE:	.29	95
MB:	.32	40
FAT:	.01	85
\$MI:	63	50



# BULLS

**85**

## LFL KADEN 2205 K

**BULL**

LIM-FLEX(43/36.3) • HOMO POLLED (P-2) • HOMO BLACK (P-2)  
11/17/2022 • BLAW 2205K • LFM2528479

**B**

JINDRA ACCLAIM  
LFL GENETIC VALUES 9148G ET  
LVLS 9066U

**MB**

MAGS UNITE TOGETHER  
LFL HERA 0109H ET  
LFL ELABORATE 7406E

GE-EPDs

ACT BW: 72    ADJ WW: 521    ADJ YW: 959    ADJ SC:  
YFS: 0.22    ADJ RIB FAT: 10.45    ADJ REA: 4.18    ADJ \$IMF:

CONSIGNED BY: LAWRENCE FAMILY LIMOUSIN, ANTON, TX

LFL Kaden 2205 K is a son of LFL Genetic Values and is out of a first-calf heifer. He should work well on first-calf heifers.

	EPDs	%Rnk
CE:	13	20
BW:	-1.4	10
WW:	55	95
YW:	96	80
MK:	23	70
TM:	51	90
CM:	9	15
SC:		
DC:	12	65
YG	-.04	80
CW:	34	50
RE:	.19	95
MB:	.68	3
FAT:	-.03	30
\$MI:	72	15



LFL GENETIC VALUES 9148G ET • Sire of Lot 85

**86**

## LFL KUBOTA 2241K ET

**BULL**

PERCENTAGE(85/75.3) • HOMO POLLED (P-2) • HET BLACK (T)  
09/12/2022 • CWPC 2241K • NXM2566347

**B**

HUNT CREDENTIALS 37C ET  
COLE GENESIS 86G  
COLE MISS XRATED 354A

**MB**

LFL DELUXE EDITION 6029D ET  
LFL FIESTA 8126 F  
LFL DANDY 6095 D

GE-EPDs

ACT BW: 72    ADJ WW: 746    ADJ YW: 1112    ADJ SC: 30.7  
YFS:    ADJ RIB FAT: 0.23    ADJ REA: 13.24    ADJ \$IMF: 3.17

CONSIGNED BY: COLT PARKINSON, LEVELLAND, TX

LFL Kubota 2241 K is a high-percentage son of LFL Fiesta, Colt's past Reserve National Champion. He should work well on first-calf heifers.

	EPDs	%Rnk
CE:	13	30
BW:	-1.8	25
WW:	56	50
YW:	83	50
MK:	29	10
TM:	57	30
CM:	8	45
SC:	.55	75
DC:	15	10
YG	-.11	55
CW:	27	75
RE:	.51	75
MB:	.4	35
FAT:	-.01	50
\$MI:	62	35



LFL FIESTA 8126 F • Dam of Lot 86

## FOR YOUR QUICK REFERENCE

**B  
G  
M  
C  
MB**

Due to the limited amount of time in a fast-paced auction, we are providing an additional tool for your quick reference for your selection of bulls for a specific purpose. Each bull has been evaluated by visual inspection, pedigree analysis, performance records and EPDs.

“B” is in the catalog to indicate those bulls we feel comfortable recommending as calving-ease bulls with birth weight EPDs below breed average and most likely suitable to use on heifers.

“G” is noted on those bulls whose evaluation of all criteria including their own performance and EPDs indicate they can add growth above breed average.

“M” is listed on those bulls whose pedigree and EPDs indicate they can add maternal ability or milk for those who plan to keep replacement heifers.

“C” is listed on those bulls whose carcass weight EPD and ribeye area EPD exceed breed average thus adding pounds of carcass and muscling to their offspring.

“MB” is listed on those bulls whose marbling EPD and/or ultrasound IMF% indicate their ability to sire offspring that fit the mainstream market.

# REFERENCE SIRES

	CE	BW	WW	YW	MK	TM	CM	SC	DC	YG	CW	RE	MB	FAT	\$MI
<b>CHR FREE AGENT 215F ET</b> LIM-FLEX (51) - Homo Polled - Homo Black - MAGS ALI x AUTO BLISS 265Y	7	3.6	94	137	22	69	4	1.10	13	0.03	46	0.43	0.46	0.01	75
<b>CHR HARD ROCKS 151H</b> LIM-FLEX (64) - Homo Polled - Homo Black - MAGS FAULTLESS 154F x CHR CRICKET 161C	13	0.1	93	149	29	75	5	1.20	11	0.11	59	0.49	0.88	0.02	89
<b>LFL DELUXE EDITION 6029D ET</b> LIM-FLEX (65) - Het Polled - Homo Black - RLBH AIR FORCE ONE x LFL ZHA ZHA 2075Z	9	1.1	71	108	19	54	2	0.80	13	0.07	32	0.26	0.26	0.02	60
<b>LFL DIVIDEND 6084D ET</b> LIM-FLEX (67) - Homo Polled - Homo Black - MAGS AVIATOR x DJ XECUTIVE PRIVILEGE	12	-0.2	66	112	30	63	8	-0.10	19	0.04	24	0.27	0.49	0.03	68
<b>LFL ESQUIRE 7084E ET</b> LIM-FLEX (57) - Homo Polled - Homo Black - MAGS CABLE x AUTO BLISS 265Y	12	1.5	81	138	19	60	8	0.60	17	-0.01	42	0.47	0.60	0.00	77
<b>LFL GAVIN 9137 G</b> LIM-FLEX (64) - Het Polled - Homo Black - LFL DELUXE EDITION 6029D ET x LFL ELEANOR 7103E ET	9	2.3	84	132	20	62	2	0.30	12	0.07	34	0.24	0.44	0.02	71
<b>LFL GENETIC VALUES 9148G ET</b> LIM-FLEX (50) - Homo Polled - Homo Black - JINDRA ACCLAIM x LVLS 9066U	16	-2.3	59	111	29	59	11	0.70	15	0.04	63	0.45	0.81	-0.01	78
<b>LFL JACKPOT 1032J ET</b> LIM-FLEX (64) - Homo Polled - Homo Black - LFL DELUXE EDITION 6029D ET x LFL ELEANOR 7103E ET	8	2.7	75	114	20	58	2	0.40	14	0.15	37	0.26	0.36	0.04	65
<b>LFL JETSON 1300J ET</b> LIM-FLEX (60) - Homo Polled - Homo Black - COLE DEPUTY 37D x AUTO BLISS 265Y	12	1.2	87	144	19	63	5	-0.10	16	0.09	27	0.28	1.15	0.04	98
<b>LFL JUDSON 1011 J</b> LIM-FLEX (60) - Homo Polled - Homo Black - LFL EDDIE 7019 E x LFL ELEGANT 7126E	6	4.1	79	120	19	58	3	0.80	14	-0.11	38	0.74	0.41	0.00	70
<b>LFL KELVIN 2067 K</b> LIM-FLEX (53) - Homo Polled - Homo Black - LFL ESQUIRE 7084E ET x MAGS DAMZEL	14	-0.1	80	138	26	65	8	0.90	12	0.01	41	0.57	0.74	0.03	81
<b>LFL KRYPTO 2048K ET</b> LIM-FLEX (57) - Homo Polled - Homo Black - AHCC HEMI 0901E ET x AUTO BLISS 265Y	10	2.5	87	143	16	60	5	0.90	15	-0.01	58	0.64	0.51	-0.01	75
<b>BNTL FLEX MACHINE 352 ET</b> LIM-FLEX (75) - Het Polled - Homo Black - COLE CADILLAC 05C x MAGS BEACH COMBER	10	0.0	59	89	27	57	6	-0.20	8	-0.29	20	0.83	0.16	-0.03	56
<b>AHCC EASY RIDER 5594E</b> LIM-FLEX (57) - Homo Polled - Homo Black - ELMW ALFALFA 103B x AHCC MISS Y AXIS C5594 ET	12	-0.2	86	137	19	62	11	1.00	12	-0.12	32	0.82	0.66	0.02	81
<b>MAGS CABLE</b> LIM-FLEX (50) - Homo Polled - Homo Black - MAGS APPLESEED x MAGS ZEQUIN	15	1.5	80	123	31	71	10	1.40	15	-0.01	42	0.48	0.65	0.00	78
<b>MAGS EAGLE</b> LIM-FLEX (50) - Homo Polled - Homo Black - MAGS WINSTON x MAGS WEB OF DECEIT	11	2.3	84	142	26	68	6	1.20	14	0.20	58	0.27	0.34	0.03	66
<b>MAGS FAULTLESS 154F</b> LIM-FLEX (53) - Homo Polled - Homo Black - TMCK CASH FLOW 247C x MAGS ANDRIA	8	2.6	87	132	28	71	0	1.40	15	0.19	59	0.47	1.02	0.06	92
<b>RATLIFF JUMP START 340J ET</b> PERCENTAGE (84) - Double Polled - Homo Black - FWLY CAN DO x RIVERSTONE CHARMED	8	2.6	67	99	29	62	5	1.10	13	-0.29	34	1.00	-0.17	-0.03	46
<b>WULFS JOINT VENTURE G579J</b> PUREBRED (89) - Homo Polled - Black - WULFS FIFTY T804F x DHIL TMG 5795C ET	5	2.9	72	116	32	69	3	0.60	12	-0.22	20	0.64	-0.02	-0.03	53
<b>WULFS KEYNOTE 4815K</b> LIM-FLEX (60) - Homo Polled - Homo Black - LFL GAMER 9116G ET x WULFS ECARTE 7036E	9	2.3	91	147	28	73	7	1.50	17	0.03	54	0.56	0.53	0.01	77

# REFERENCE SIRES



**CHR HARD ROCKS 151H**



**CHR FREE AGENT 215F ET**



**LFL DELUXE EDITION 6029D**



**LFL DIVIDEND 6084D ET**



**LFL GAVIN 9137G**



**MAGS EAGLE 229&**

# TERMS & CONDITIONS

## IDENTIFICATION OF ANIMALS

1. Each animal sold will have a readable tattoo corresponding to its registration paper.
2. Seller agrees to check all tattoos for accuracy prior to the sale. The buyer has the responsibility for rechecking the tattoos after taking possession and reporting any discrepancies to the seller immediately.
3. All animals to be sold will be identified by their official registration numbers, their tattoos and their registered names. If nicknames are used, they should be in addition to the other information.
4. The NALF Board of Directors recommends that, when any animal is sold, there is complete disclosure of any retained genetics in the form of pregnant recipients, frozen embryos or frozen semen.
5. The prefix in an animal's registration name cannot be removed or changed by subsequent owners. Owners other than the original applicant cannot add a two-, three- or four-letter prefix to the name of the animal unless it matches the prefix in the animal's tattoo.

## REGISTRATION CERTIFICATES

1. The seller of the animal will submit the original registration certificate with transfer information or an application for registration with transfer information on it so that a certificate can be produced by NALF and transferred to the new buyer. The seller must sign the back of the certificate on the application to authorize the transfer.
2. It is the responsibility of the seller to provide NALF with the buyer's complete name, address and membership number (if available) so the transfer can be completed. It is important that the membership number be given if the buyer is already a member of NALF.
3. It is the seller's responsibility to provide the registration certificate or application and transfer information to NALF within 60 days following the date of sale and pay transfer and registration fees.

## TERMS

Terms of all sales are considered to be cash unless credit arrangements have been made prior to the sale between the buyer and the seller.

## HEALTH

1. On all animals sold, health tests will be announced at the sale or printed in the sale catalog. It is understood that health papers reflect the condition of the animal at the time of the sale but carry no further guarantee as to the future health of the animal.
2. Buyers having special health requests or who wish to take cattle into states with specific and rigid health regulations should inquire specifically about the health tests required for entry into their state prior to the sale.
3. All females sold are considered to be calfhood vaccinated for brucellosis unless they are otherwise stated in the catalog or announced from the block. It is suggested that verification of vaccination be written on the health certificate.

## PURCHASER'S RISK

1. Each animal becomes the risk of the purchaser as soon as it is sold.
2. It is the responsibility of the buyers to see that their purchases are fed and cared for following the sale.
3. It is the responsibility of the buyers to arrange all trucking for their purchases.

## ANNOUNCEMENTS

1. Any change from the information that is printed in the catalog will be announced from the auction block.
2. All announcements made from the auction block take precedence over the printed catalog.
3. Cataloged lots not selling will be announced prior to the sale or printed on a current supplement sheet.

## BREEDING GUARANTEE

1. All animals are guaranteed to be breeders with the exception of (a) calves under 12 months of age; (b) in the event of any injury or disease that occurs to the calf after sale; (c) gross negligence or willful misconduct on the part of the purchaser; or (d) females used in embryo transplant/transfer (ET).
2. A lactating cow with calf at side, sold as one unit, is a proven breeder, as indicated by the calf at side.
3. Bulls are guaranteed to be breeders at the time of sale or at 14 months of age if they are younger than 14 months at time of sale. Any bull that either settles cows by natural service or passes a fertility test made by a competent veterinarian is considered fertile. Any guarantee with respect to the ability to freeze semen shall be a separate agreement between buyer and seller.
4. Females sold as safe in calf have been examined by a competent veterinarian or other reproductive technician and are so guaranteed to be with calf. It is the buyer's responsibility to pregnancy-check all females and report any discrepancies within 30 days following the sale.
5. Any guarantee with respect to ET production shall be a separate agreement between buyer and seller.

## OPTIONS AND PRIVILEGES OF RETURN OR ADJUSTMENT

1. All claims for adjustments or refunds must be made in writing either within six months of the date of the sale or no later than six months after the animal reaches 18 months of age, whichever occurs later.
2. In the event that an animal is claimed to be a nonbreeder, the animal must be returned to the farm of the seller in good condition and must have met the health requirements of the original seller's state. The seller shall be entitled to six months' trial following the return of the animal in which to prove that the animal is a breeder. If, at the end of six months, the seller has been unable to prove the animal as a breeder, the seller shall, at the option of the buyer, replace the animal with another of equal value or refund the total purchase price. The return of the purchase price shall in all cases be deemed as full settlement.
3. Any expense incurred in transporting the animal that is claimed to be a nonbreeder shall be the responsibility of the purchaser except that the seller shall be responsible for transportation costs in the excess of the distance between the purchaser's farm and the location of the sale. If the seller proves the animal to be a breeder, it shall be the obligation of the purchaser to take delivery of the animal and pay all expenses incurred for transportation.
4. It is the obligation of the buyer and seller to negotiate any settlements on cattle that have not been properly represented at a sale. The selling of an animal constitutes a contract between buyer and seller,

and it is neither the responsibility nor the right of NALF or of the sale-management firm to settle disagreements between buyers and sellers of cattle that have not been properly represented.

The return of an animal at the expense of the purchaser with a refund of the purchase price made by the seller is in all cases considered a complete settlement. Other settlements, which are negotiated between buyer and seller, may be equitable to cover instances in which cattle are not as represented sale day, but that does not warrant complete return of the animal.

## PARENTAGE VERIFICATION

1. If, at some time, the purchaser raises a question as to the accurate parentage of an animal he has purchased, it may be settled by DNA-typing. DNA samples will be taken by a licensed veterinarian of the animal in question and of its sire and dam if they are not currently on file. The verification of the parentage test will be made by one of NALF's approved laboratories (GeneSeek Inc., or Zoetis Inc.). The results of these tests will be sent directly to NALF and will be sent on to both the purchaser and the seller so they will be aware of the official results.
2. If the DNA tests indicate that the animal is not as it was registered originally, the seller will reimburse the buyer for the test and will refund the total purchase price of the animal or replace the animal with another of equal quality and value as determined by the purchaser.
3. It is important to remember that DNA-typing is not 100 percent exclusive and that it simply identifies animals that will qualify as the parents or animals that cannot be the parents.
4. All bulls born after January 1, 2009 that are to be used for artificial insemination (AI) must be parent-verified by DNA-typing (both the sire and dam). Sires born between January 1, 2001 and December 31, 2008 must have a DNA type on file and be parent verified through DNA typing. All females born after January 1, 2009 that are to be used for ET must be sire-verified through DNA-typing. All females born prior to January 1 2009, that are to be used for ET must have DNA type on file and be sire verified through DNA typing. If sire is deceased and no sample is available for DNA typing, blood typing may be used for sire verification.

## HORNED/SCURRED/POLLED

### DEFINITIONS

1. **HORNED** - An animal with a horn growth affixed to the skull that has or has not been removed.
2. **POLLED/SCURRED** - An animal with rudimentary horn growth that will not develop into a horn. The rudimentary horn growth may or may not become affixed to the skull at an older age.
3. **POLLED** - An animal with absence of horn growth. (An animal can have scurs and still be genetically polled.)
4. **SMOOTH POLLED** - A smooth-polled individual has no scurs and does not develop scurs later in life.

### GUARANTEES

1. If an animal is sold as polled or polled/scurred and proves to be horned, the seller shall be obligated to refund the purchase price upon return of the animal to the farm of the seller at the expense of the seller or may be exchanged for a polled animal of equal value, whichever is acceptable to the buyer. The buyer has 30 days from date of sale to notify the seller that an adjustment is in order.
2. If an animal is sold as smooth-polled and proves to be scurred, the seller shall be obligated to refund the price upon return of the animal to the farm of the seller at the expense of the seller or, at the buyer's option, shall be exchanged for a smooth-polled animal of equal value.
3. If an animal is sold as polled and develops scurs, the seller will not be obligated to make any adjustment because a scurred animal is considered polled.
4. If an animal is sold as polled and has scurs, it shall be announced at the time of sale that the animal has scurs. If it is not announced and the buyer finds before the animal leaves the sale premises that the animal has scurs, the buyer must notify the seller of the findings. The seller shall then be obligated to refund the purchase price.

## DISCLOSURE OF RETAINED GENETICS

Because the sale of a registered Limousin animal constitutes the transfer of ownership of all, or a portion of, a "genetic package," it is the seller's responsibility to inform potential buyers of all retained genetics of animals in circumstances where potential exists for buyers to be misled. This includes, but is not limited to, semen collected and frozen prior to sale, embryos flushed, existing clones as either live animals or embryos, and cows carrying the service of an offered bull.

## DISCLOSURE OF TESTS RESULTS FOR KNOWN GENETIC DEFECTS AND FACTORS

1. The seller shall have an affirmative duty to notify the buyer of any test results for genetic defects or genetic factors not otherwise reflected on an animal's pedigree.
2. Nothing contained herein should be construed to relieve the parties from complying fully with the rules and policies of NALF relating to genetic defects generally or individually.

## LIMITATIONS OF OBLIGATIONS

1. If these suggested terms and conditions are adopted, they should constitute a contract between the buyer and seller for each animal sold under these terms, as such; and it should be binding upon both parties. Animals resold following purchase in a sale shall constitute a separate transaction, and the privileges and obligations of the original two parties connected thereto are not covered by the terms and conditions of sale.
2. NALF, its directors and employees are not in any way responsible or liable for enforcing the suggested terms and conditions of any agreement involving transactions between buyers and sellers.

## INSURANCE

Anyone wishing to insure their purchases may do so by contacting the sale manager or settling clerk.

## MAIL BIDS

Mailed or telephoned bids will be handled in a most confidential manner if you are unable to attend the sale personally. By contacting a representative of the sale staff prior to sale day, you will enable us to assist you at ringside on sale day.

# GLOSSARY OF THE SALE

**FERTILITY TESTED** – Definition: Bulls' semen has been tested by a licensed veterinarian or a recognized A.I. breeding center and is considered a satisfactory breeder as per the accompanying signed veterinarian certificate.

**HEALTH PAPERS** – Definition: Proper health papers furnished on all animals in the sale resulting from T.B. and Bangs test.

a. **T.B. TEST** – Animals have been tested for T.B. and found negative within thirty (30) days of the sale, both males and females with the exception of young calves or from a TB-free state.

b. **BANGS TEST** – Animals have been tested by licensed veterinarian and have met the requirements for a negative test in the state which animals sells. This includes all males and females except those exempted from this test due to age, calfhood vaccination, or certified Brucellosis free herd status.

**BREEDER** – The owner or lessee of the dam at the time the dam was served to produce the calf.

**OWNER** – The individual, partnership, or corporation in whose name an animal is registered.

**HORNED** – Those animals with hard, bony projections from their head. May be surgically removed or dehorned.

**POLLED** – Those animals that are genetically hornless. They have at least one copy of the polled gene. Animals with both parents polled that have been tested and found not to be homozygous are not listed double polled, but Het Polled.

**DOUBLE POLLED** – Those animals that result from two polled parents and have not been DNA-tested.

**HOMOZYGOUS POLLED** – Individual has been DNA-tested to be genetically "PP" or proven by parentage to be homozygous thus not carrying the "p" horned gene by pedigree or DNA test.

**PB** – Those animals that are 94% or more Limousin.

a. **American PB** – Those upgraded PBs that are 94% or greater Limousin, and 6% or less other breed as indicated by the breed codes. Registration numbers beginning NPM (North American PB Male) and NPF (North American PB Female).

b. **Fullblood** – From 100% or full French ancestry. They have registration numbers beginning with NFM (North American Fullblood Male) and NFF (North American Fullblood Female).

**HOMOZYGOUS BLACK** – DNA-tested and found to be homozygous black or genotype ED/ED or both parents were DNA-tested homozygous.

**DOUBLE BLACK** – Indicates animals whose parents are both black in color. These animals have NOT been DNA-tested. Animals with both black parents have been tested and found to be red carriers are not listed as double black, but as Het Black.

**LIM-FLEX** – Denotes the Limousin-Angus hybrid that may vary in composition from 25-75% Limousin and 25-75% Angus or Red Angus with a maximum allowance of other breed or unknown genetics of 12.5%.

**EPD** – Expected Progeny Difference – A user friendly way of summarizing performance information for quick reference.

**GE-EPDs** – Genomically Enhanced Expected Progeny Differences are the best estimate of an animal's genetic worth as a parent. GE-EPDs predict an animal's genetic worth as a parent as if they have produced 10-25 progeny

**% RANK** – Percentile breakdown that allows for quick reference when comparing individuals to current sires of the most recent calf crop recorded with NALF.

**(100/89.9)** – Percentage of Limousin genetics. The first figure indicates the rounded NALF percentage while the second number is the actual percentage of Limousin genetics.

**RETAINING SEMEN INTEREST** – Seller retains option to collect semen on said bull at buyer's convenience and seller's expense. Should both parties agree to offer semen for sale – each share in revenue proportionately.



# NOTES & AVERAGES

---

---

---

---

---

---

---

---

---

---

---

---

---

---

---

---

---

---

---

---

---

---

---

---



LOTS	AVERAGE	TOTAL
_____ FALL PAIRS	_____	_____
_____ SPRING BREDS/PAIRS	_____	_____
_____ OPEN HEIFERS	_____	_____
_____ BULLS	_____	_____
_____ TOTAL SALE GROSS	_____	_____



ENTRY DEADLINE: May 1, 2024  
 LATE ENTRY DEADLINE: May 15, 2024

SHOW LOCATION:  
 Tulsa State Fair  
 4145 E 21st St. • Tulsa, OK 74114

**2024 NATIONAL  
 JUNIOR LIMOUSIN  
 SHOW & CONGRESS**

**HEADQUARTER HOTELS:**

Hilton Garden Inn Tulsa Midtown  
 4518 E Skelly Dr. • Tulsa, OK 74135 \_\_\_\_\_ 918/878.7777

Holiday Inn Express & Suites Tulsa Midtown  
 4680 E Skelly Dr. • Tulsa, OK 74135 \_\_\_\_\_ 918/986.8200



**LIVESTOCK NUTRITION CENTER**

**BETTER FEED, BETTER RESULTS**

Livestock Nutrition Center specializes in blending customized rations, supplements and premixes to meet the specific nutritional needs of your operation. We understand that management, performance objectives and feeding practices can be vastly different between operations, and that these differences dictate specific nutritional or formulation requirements. Our experienced sales staff will work with you to design a feeding program that is specific to your operation.



[LNC-ONLINE.COM](http://LNC-ONLINE.COM)



24018 State Hwy. 5  
Chattanooga, OK 73528

**POSTAL CARRIER: PLEASE DO NOT DELAY - DATED MATERIAL**

# COYOTE HILLS RANCH

## ANNUAL LIMOUSIN & LIM-FLEX PRODUCTION SALE

Saturday, May 6, 2023 • Noon CST • At The Ranch • Chattanooga, Oklahoma



Please do not trust the directions from your smartphone. They are not always accurate. To find us using GPS coordinates, enter the following in the search field of iPhone Maps or Google Maps on your smartphone: 34.3914771, -98.6986063 or scan this QR code with your smartphone camera.

